

Blessed Are They
Who Dwell
Ps. 84

Gene Klosner

Light the Fire! Music

www.LTFMusic.com

Thank you for choosing **Cher & Gene Klosner's psalm series!**

All of our psalms are written in comfortable "congregational keys," and presented in SATB(+), but have been written so that all music ministry groups can use them, from soloist to duo, to contemporary praise teams (SAT), to full choirs. Also available in Soloist/Small Group format.

This PDF contains the following versions:

- Refrain Full Score + Verse chords (for director, piano accompanist)
- Refrain P/G/V + Verse chords (for piano accompanist)
- Refrain Lead Sheet + Verse chords (for cantor, guitar accompanist, piano "chorders" - similar to fake books)
- Refrain SAATB (or SSATB) (for choir members)
- Verse Full Score (for cantor, accompanist) - different sets of verses for different uses
- Refrain Assembly (for director, worship aid makers)

Format:

- Solo cantor refrain melody*
- Choir and congregation respond in **unison** (melody) refrain
- Solo cantor verse
- Choir and congregation refrain with harmonies
- [Continue thru multiple verses and harmonized refrains]
- End with repeat of harmonized refrain (optional)

*The melody line is the soprano part (male cantor sings an octave below), unless otherwise indicated.

Verses are by ONE **cantor**, chant-style (non-metered, free rhythm) using either of the two melodies, depending on their vocal range. Verses are not designed for multiple singers or harmonies.

For the **accompanist**, the rhythm resumes (a tempo) on the last word of each verse to bring choir and congregation in for the refrain, which then has **choir** harmonies from there on out.

We like to do a double refrain after the last verse to "close out" the song, so we use the turnaround accompaniment for repeating the refrain, then the Final ending at the very end.

Psalm Tones:

Overall, we have 16 different melodies of psalm tones for the verses that get "mixed and matched" with all the hundreds of different psalm refrains throughout the 3-year cycle, one per psalm refrain. We give two options from which the cantor can choose, depending on the cantor's vocal range. Choose the smaller notes for the lower melody.

This way, a cantor doesn't have to learn hundreds of different verse melodies over the three-year cycle.

The particular psalm tones assigned to this refrain are Psalm Tone 5 in F, which starts up a third from the last note of the refrain (Mi in solfege), and Psalm Tone 4 in F, which instead starts on the same note as the last note of the refrain (Do in solfege).

Please report usage of this music to CCLI and/or OneLicense.

Other tips on "Blessed Are They Who Dwell":

Solo Cantor: Use with Psalm Tone 4 or 5 (in F).

Singers: The top note in the Alto line (A1) could otherwise be done by S2, depending on your choir configuration.

Guitarists: If there are multiple guitarists, choose different keys/capsos to make the sound richer.

We strongly recommend listening to the recordings of this psalm.

Musically yours,

Cher & Gene

DIFFICULTY LEVEL		
(easy/medium/advanced)		
melody	harmony	accompaniment
m	m	m

Blessed Are They Who Dwell

Ps. 84

Light, Tenderly

♩ = 100

Gene Klosner

Capo 5: C
Capo 3: D
F

Gsus⁴
Asus⁴
Csus⁴

G
A

Piano

The piano accompaniment for the first system is written in 4/4 time with a key signature of one flat (Bb). The right hand features a melodic line with eighth and quarter notes, while the left hand provides a harmonic accompaniment with chords and moving bass lines.

The second system includes vocal staves for Soprano (S), Alto (A), Tenor (T), and Bass (Bs), along with a piano accompaniment (Pnc). The lyrics are: "Bles - sed, bles - sed they who dwell, Bles - sed, bles - sed are they who dwell, Bles - sed, bles - sed are they who dwell, Bles - sed, bles - sed they who dwell,". The piano accompaniment continues with a similar melodic and harmonic structure. Chord symbols are provided above the vocal staves: C, D, F, C/E, D/F#, F/A, F, G, Bb, C/E, D/F#, F/A.

Blessed Are They Who Dwell (Ps. 84)

5

S
A
T
Bs
Pno.

Chords: Dm7, Em7, Gm7, BbADD9, CADD9, EbADD9, Csus4, Dsus4, Fsus4, C, D, F, G7, C, D

1. Turnaround into repeating refrains or into verses
2. Final

1. Turnaround into repeating refrains or into verses
D.S.
2. Final

dwel in your_ house, O_ Lord.

— dwell in your house, O Lord.

— dwell in your house, O Lord.

dwel in your house, O Lord.

Verse chords (Psalm Tone 4/5), Guitar, ca5:

C | Em7 | Dm7 | G |
F#m7 | Am | Dm7 | G7sus4 |

Verse chords (Psalm Tone 4/5), Guitar, ca3:

F#m7 | Em7 | A |
F#m7 | Em7 | A7sus4 |

Verse chords (Psalm Tone 4/5), Piano/Guitar, no capo:

C | Am7 | G7 | C |
Dm | Gm7 | C7sus4 |

SAMPLE

Blessed Are They Who Dwell

Ps. 84

Gene Klosner

Light, Tenderly

♩ = 100

Capo 5: C
Capo 3: D
F

Gsus⁴
Asus⁴
Csus⁴

G
A
C

Piano introduction musical notation in 4/4 time, featuring chords G, A, and C.

1 C D F C/E D/F# F/A F G C/E D/F# F/A

Vocal and piano musical notation for the first line of the verse. Lyrics: "Blessed, blessed are they who dwell". Includes a triplet of eighth notes.

5 Dm⁷ Em⁷ Gm⁷ BbADD9 Dsus⁴ C D F G⁷ A⁷ C⁷ C D F

Vocal and piano musical notation for the second line of the verse. Lyrics: "dwell in your house, O Lord." Includes first and second endings with "D.S." and "Final" markings.

Verse chords (Psalm Tone 4/5), Guitar, ca5:

C | Em7 | Dm7 | F#m7 | G7sus4 |

Verse chords (Psalm Tone 4/5), Guitar, ca3:

D | F#m7 | Em7 | A | F#7 | Bm | Em7 | A7sus4 |

Verse chords (Psalm Tone 4/5), Piano/Guitar, no capo:

A7 | Dm | Gm7 | C | A7 | Dm | Gm7 | C7sus4 |

Blessed Are They Who Dwell

Ps. 84

Gene Klosner

Light, Tenderly

♩ = 100

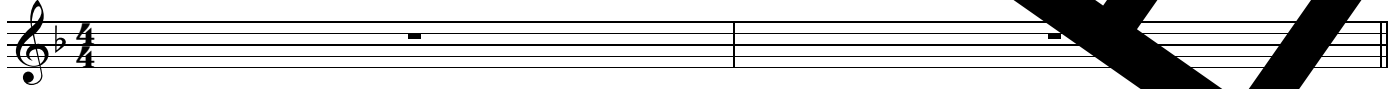
Capo 5: C
Capo 3: D
F

Gsus⁴
Asus⁴
Csus⁴

G

A

F



Bles - sed, bles - sed are they who dwell,

Dm⁷

Em⁷

Gm⁷

B^bADD⁹

C⁺ADD⁹

E^bADD⁹

Fsus⁴

Fsus⁴

Fsus⁴

G⁷

A⁷

C⁷

F

F

F

C

D

F

G

A

C

D

F

F

F

F

F

F

F

F

F

F

F

F

F

F

F

F

F

F

F

F



dwell in your house,

1. Turnaround into repeating refrains or into verses D.S. 2. Final

Verse chords (Psalm Tone 4/5), Guitar, ca3:

D | F#m7 | Em7 | G |
F#7 | Bm | Em7 | A7 |

Verse chords (Psalm Tone 4/5), Guitar, ca3:

D | F#m7 | Em7 | G |
F#7 | Bm | Em7 | A7 |

Verse chords (Psalm Tone 4/5), Piano/Guitar, no capo:

F | A7 | Gm7 | C |
A7 | Gm7 | Gm7 | C7sus4 |

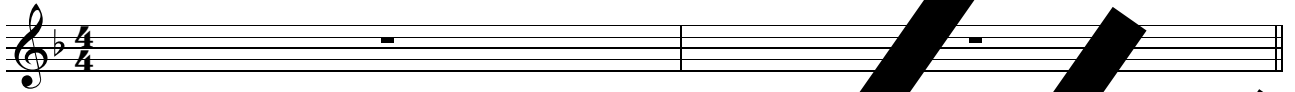
Blessed Are They Who Dwell

Light, Tenderly

Ps. 84

Gene Klosner

♩ = 100



NOTE: No harmonies until after 1st verse; follow Soprano line for melody. See format below. A1 can be sung by S2 instead, depending on the configuration of your choir sections.

1

S

Bles - sed, bles-sed are they who dwell,

A1&2 / S2&A

Bles - sed, bles-sed are they who dwell,

Bar

Bles - sed, bles-sed are they who dwell,

Bs

Bles - sed, bles-sed are they who dwell,

5

S

dwell in your house, O Lord.

A1&2 / S2&A

dwell in your house, O Lord.

Bar

dwell in your house, O Lord.

Bs

dwell in your house, O Lord.

Footnote:

- *Refrain melody**
- *Choir and congregation respond in unison (melody) refrain*
- *Solo cantor verse*
- *Choir and congregation sing with harmonies*
- *[Continue through verses and harmonized refrains]*
- *End with repeat of harmonized refrain (optional)*

*The melody line is the soprano part (male cantor sings an octave below).

Blessed Are They Who Dwell verses
 Ps. 84:2-3, 5-6, 9-10 / Psalm Tones 5 & 4 in F
The Holy Family of Jesus, Mary and Joseph - Optional

Freely chanted, non-metered, solo cantor only

Cherol Klosner-Lane/Gene Klosner

Capo 5: C
 Capo 3: (D)
 F

Em⁷ (F#m⁷) Am⁷ Dm⁷ (Em⁷) Gm⁷

G (A) C

PT 4*/5
 *opt. lower melody

1. How lovely is your dwelling place, O LORD of hosts! My soul yearns and pines for the courts of LORD.
 2. Happy they who dwell in your house! Continual - ly they praise you.
 3. O LORD of hosts, hear our prayer, hearken, O God of Ja - cob!

Piano

3
 4/5

E⁷aug (F#⁷aug) A⁷aug

Am (Em)

Dm⁷ (Em⁷) Gm⁷

1. My heart and my flesh cry out for the liv - ing
 2. Happy the men whose strength you have shown. Their hearts are set up - on the
 3. O God, be - hold our shield, and look upon the face of your a -

Pno.

♩ = 100

G⁷sus⁴ (A⁷sus⁴) C⁷sus⁴

a tempo

4/5

1. O God,

2. pil - grimage.

3. noit -

♩ = 100

a tempo

Pno.

To m. 1 of refrain...

Blessed Are They Who Dwell verses
 Ps. 84:3-4, 5, 11 / Psalm Tones 5 & 4 in F
 Ritual Masses: For the Conferral of Holy Orders

Cherob Klosner-Lane/Gene Klosner

Freely chanted, non-metered, solo cantor only

Capo 5: C
 Capo 3: (D)
 F

PT 4*/5

**opt. lower melody*

1. My soul yearns and pines
 for the courts of the LORD... My heart and my flesh cry out for the living God.

2. Bles - sed they who dwell in your house!

3. I had rather one day in your courts than a thousand elsewhere;

Piano

Em⁷ (F#m⁷) Am⁷ Dm⁷ (Em⁷) Gm⁷ G (A) C

3

4/5

1. Even the sparrow finds a home,
 and the swallow a nest in which she has her young — Your stars, O LORD of hosts, my king and my

2. Contin - ual - ly they praise —

3. I had rather lie
 at the threshold of the house of my God — dwell in the tents of the

Pno.

E⁷aug (F#⁷aug) A⁷aug Am (Bm) Dm Dm⁷ (Em⁷) Gm⁷

♩ = 100

5

a tempo

4/5

od!

2. you.

3. wick -

♩ = 100

mpo

Pno.

G⁷sus⁴ (A⁷sus⁴) C⁷sus⁴

To m. 1 of refrain...

Blessed Are They Who Dwell verses

Ps. 84:3, 4, 5, 6a and 8, 11 / Psalm Tones 5 & 4 in F

For the Holy Church: For Priests

Cherob... Klosner-Lane/Gene Klosner

Freely chanted, non-metered, solo cantor only

Capo 5: C

Capo 3: (D)

F

Em⁷

(F#m⁷)

Am⁷

Dm⁷

(Em⁷)

Gm⁷

G

(A)

C

PT 4*/5
*opt. lower melody

1. My soul yearns and pines for the courts of the LORD.
2. Even the sparrow finds a home, and the swallow a nest, in which she puts her young —
3. Blessed they who dwell in your house!
4. Blessed the men whose strength you are!
5. I had rather one day in your courts than a thousand elsewhere;

Piano

E⁷aug
(F⁷aug)
A⁷aug

Am
(Bm)
Dm

Dm⁷
(Em⁷)
Gm⁷

3
4/5

1. My heart is yearning for the living God.
2. Your altars, O LORD, are my strength, my God, my king, and my praise.
3. Continue your strength to me, O LORD.
4. They go from strength to strength.
5. I had rather lie at the threshold of the house of my God than dwell in the tents of the living.

Pno.

♩ = 100

G⁷sus
(A⁷sus)
C⁷sus⁴ *capo*

4/5

1. God, our strength!
2. O LORD, our strength!
3. you, O LORD, our strength!
4. strength, O LORD, our strength!
5. wick...

Pno.

a tempo

To m. 1 of refrain...

Blessed Are They Who Dwell verses

Ps. 84:3-4, 6 and 8a, 11 / Psalm Tones 5 & 4 in F

Various Needs: For Vocations to Holy Orders or Religious Life

Cherob Klosner-Lane/Gene Klosner

Freely chanted, non-metered, solo cantor only

Capo 5: C
Capo 3: (D)
F

Em⁷
(F#m⁷)
Am⁷

Dm⁷
(Em⁷)
Gm⁷

G
(A)
C

PT 4*/5
*opt. lower melody

1. My soul yearns and pines
for the courts of the LORD.. My heart and my flesh cry out for the LORD in God.
2. Bles - sed the men whose strength are!
3. I had rather one day in your courts than a thousand elsewhere;

Piano

3
E⁷aug
(F#⁷aug)
A⁷aug

Am
(Bm)
Dm

Dm⁷
(Em⁷)
Gm⁷

4/5

1. Even the sparrow finds a home
and the swallow a nest in which she sits young altars,
2. Their hearts are set up on the pillars of the temple. They go from strength to strength,
3. I had rather lie at the threshold of the house of my God than dwell in the tents of the

Pno.

♩ = 100

G⁷sus⁴
(A⁷sus⁴)
C⁷sus⁴

5
a tempo

4/5

1. strength.
2. strength.
3. wick -

♩ = 100

Pno.

To m. 1 of refrain...

Blessed Are They Who Dwell

Ps. 84

Gene Klosner

Musical score for 'Blessed Are They Who Dwell' in 4/4 time. The score consists of two staves of music. The first staff begins with a treble clef and a key signature of one flat (B-flat). The melody starts with a quarter note G4, followed by a quarter note A4, a quarter rest, and a quarter note B4. A triplet of eighth notes (G4, A4, B4) is marked with a '3' above it. The second staff continues the melody with a quarter note G4, a quarter note F4, a quarter note E4, a quarter rest, a quarter note D4, a quarter note C4, and a quarter note B3. The lyrics are: 'Bles - sed, bles - sed are they who dwell, dwell in your house, O Lord.'

The English translation of Psalm Response from *Lectionary for Mass* © 1969, 1981, 1997, International Commission on English in the Liturgy Corporation. All rights reserved. Music Copyright © 2000 Light the Fire! Music (ASCAP). All rights reserved. Used with permission. www.LightTheFireMusic.com

Use for:

Feast of the Holy Family of Jesus, Mary and Joseph - Optional Colorful (foptC)

Ritual Masses: For the Conferral of Holy Orders

Various Needs: For the Holy Church: For Priests

Various Needs: For the Holy Church: For Vocations to Holy Orders or Religious Life

Use with Psalm Tone 4 or 5 in F

Text version:

Blessed Are They Who Dwell (Ps. 84) (Gene Klosner)

Blessed, blessed are they who dwell in your house, O Lord.

Psalm refrain Copyright © 1969, 1981, 1997, International Commission on English in the Liturgy, Inc. (ICEL). All rights reserved. Music Copyright © 2000 Light the Fire! Music (ASCAP). All rights reserved. Used with permission. www.LTFMusic.com.

This psalm rendition is adapted and uses Verbatim 1 of the refrain and verses.

Report usage to CCLI or OneLicense

CCLI Song #7168025

OneLicense Song ID: batw

SAMPLE