

Lord, Every Nation on Earth
Ps. 72

Cherolyn Klosner-Lane/Gene Klosner
Light the Fire! Music
www.LTFMusic.com

Thank you for choosing **Cher & Gene Klosner's psalm series!**

All of our psalms are written in comfortable "congregational keys," and presented in SATB(+), but have been written so that all music ministry groups can use them, from soloist to duo, to contemporary praise teams (SAT), to full choirs. Also available in Soloist/Small Group format.

This PDF contains the following versions:

- Refrain Full Score + Verse chords (for director; piano accompanist)
- Refrain P/G/V + Verse chords (for piano accompanist)
- Refrain Lead Sheet + Verse chords (for cantor; guitar accompanist, piano "chorders" - similar to fake books)
- Refrain SSATB (for choir members)
- Verse Full Score (for cantor; accompanist) - different sets of verses for different uses
- Refrain Assembly (for director; worship aid makers)

Format:

- Solo cantor refrain melody*
- Choir and congregation respond in **unison** (melody) refrain
- Solo cantor verse
- Choir and congregation refrain with harmonies (may wait to add descant until after 2nd verse or later)
- [Continue thru multiple verses and harmonized refrains]
- End with repeat of harmonized refrain (optional)

*The melody line is the soprano 1 part (male cantor sings an octave below), unless otherwise indicated.

Verses are by ONE **cantor**, chant-style (non-metered, free rhythm) using either of the two melodies, depending on their vocal range. Verses are not designed for multiple singers or harmonies.

For the **accompanist**, the rhythm resumes (a tempo) on the last word of each verse to bring choir and congregation in for the refrain, which then has **choir** harmonies from there on out.

We like to do a double refrain after the last verse to "close out" the song, so we use the turnaround accompaniment for repeating the refrain, then the Final ending at the very end.

Note to accompanist:

Follow the "turnaround" chords when repeating the refrain (refer to recording).

Use the "interlude into verses" when going into verses.

Psalm Tones:

Overall, we have 16 different melodies of psalm tones for the verses that get "mixed and matched" with all the hundreds of different psalm refrains throughout the 3-year cycle, one per psalm refrain. We normally give two options from which the cantor can choose, depending on the cantor's vocal range; for this psalm, we give one psalm tone choice, but a few lower notes if needed. Choose the smaller notes for the lower melody.

This way, a cantor doesn't have to learn hundreds of different verse melodies over the three-year cycle.

The particular psalm tones assigned to this refrain are Psalm Tone 1 in D, which starts a fifth up (Sol in solfege) from the end of the refrain, and Psalm Tone 2 in D, which starts up a third (Mi in solfege).

The cantor should also note that there are a few configurations of the verse texts (all configurations are part of this PDF) connected to this refrain; be sure to check the top of the verse pages for the correct set of verses for the day.

Please report usage of this music to CCLI and/or OneLicense.

Other tips for "Lord, Every Nation on Earth":

Solo Cantor: Use with Psalm Tone 1 or 2 (in D). Melody is S1 part, not the S2 descant.

S2 Descant: when it's time for you to add the descant (after the 1st or 2nd verse), note that your "O" comes before the melody.

Altos: In m. 6, your part has a slightly different timing from the melody, so your "a-" (in "adore") is in parentheses.

Tenors: In m. 6-7, your part has a slightly different timing from the basses (and S1), so your words are **above** the notes there.

Pianists: Most of the accompaniment is a pattern of a chord followed by the arpeggiated version of the same chord.

Guitarists: see instructions regarding the "A walkup"; you can ignore the bass line, leaving that to the piano and/or bassist.

We strongly recommend listening to the recordings of this psalm.

Musically yours,

Cher & Gene

DIFFICULTY LEVEL		
(easy/medium/advanced)		
melody	harmony	accompaniment
e	m	m

Lord, Every Nation on Earth

Ps. 72

Cher K...ner-Lane/Gene Klosner
 [O Come, O Come the Faithful: John F. Wade
 English Canon Frederick Oakeley]

Joyful, Liltng

♩. = 52

Capo 2: C -2

Piano

S2 Desc.

melody on S1 line

S1/A

T/B

Pno

come, let us a - dore Him O come let us a -
 Lord, ev' - ry na - tion on earth, Lord, ev' - ry
 Lord, ev' - ry na - tion on earth, Lord, ev' - ry

Verse chords (Psalm Tone 1 or 2), Piano/Guitar:

D | A | G | A |
 F#m (aug)* | Bm | G7 | A7sus4 |

Verse chords (Psalm Tone 1 or 2), Guitar, capo 2:

C | G | Dm7 | G |
 E7 (aug)* | Am | Dm7 | G7sus4 |

*augmented chord is optional

The "A walk-up" (A, A9/A, A/C#) in the intro and turnaround can be played on guitar in a few different ways: simply play an A chord then off (all open strings), then back on; *or* the following progression:

234 2 1 2 3

Lord, Every Nation on Earth - Ps. 72

4

S2 Desc. *dore Him, O come, let us a -*

S1/A *na-tion on earth will - dore you, (a) a -*

T/B *na-tion on earth a - dore you, a -*

Pno

C G C F C/E Am F
D A D G D/F# A7 Bm G

D.S.

7

S2 Desc. *Christ the O Lord!*

S1/A *dore you, Lord! Lord!*
dore you, Lord! Lord!

T/B *dore you, Lord! Lord!*

Pno

C/G G C G G/A G/B C Csus4 C
D/A A D A A9/B A/C# D Dsus4 D

D.S.

1. *turnaround into repeated refrains and interlude into verses* | 2. *Final*

Lord, Every Nation on Earth

Ps. 72

Cherry Gosner-Lane/ Gene Klosner

Joyful, Lifting

♩. = 52

Capo 2: C
-2 D F/C G/D C G G⁹/A G/B
A⁹/B A/C

Piano

1 C F/C C G C F/C
D G/D D A D G/D

Lord, _____ ev' - ry na-tion on earth, Lord, _____ ev' - ry

Pno

4 C G C F C/E G⁷ Am F
D A D D/F# A⁷ Bm G

na-tion of earth will a - dore you, a -

Pr

Refrain Text Copyright © 1968, 1981, 1997, International Committee on English in the Liturgy, Inc. (ICEL). All rights reserved. Used with permission.

Music Copyright © 1999 Light the Fire! Music (ASCAP). All rights reserved. www.LightTheFireMusic.com

Report Refrain usage to CCLI/OneLicense

Lord, Every Nation on Earth - Ps. 72

C *G* *G⁹/A* *G/B* *C* *Csus⁴* *C*
D *A* *A⁹/B* *A/C#* *D* *D* *D*

7 *C/G* *G* *C* *Csus⁴* *C*
D/A *A* *D* *D* *D*

1. *turnaround into repeated refrains and interlude into verses* | 2. *Final*

dore you, Lord! Lord!

D.S.

1. *turnaround into repeated refrains and interlude into verses* | 2. *Final*

Pno

G/D

 211

Verse chords (Psalm Tone 1 or 2), Piano/Guitar:
 D | A | Em | D | F#7 (aug)* | D | Em | A7sus4 |

Chords (Psalm Tone 1 or 2), Guitar, capo 2:
 G | D | Em | D | F#7 (aug)* | Am | D | A7sus4 |

*augmented chord is optional

The "A walk-up" (A, G/B, A/C#) and turnaround can be played on guitar in a few different ways: simply play an A chord (then off the open strings), then back on; *or* the following progression:

234

 2 1

 2 3

SAMPLE

Lord, Every Nation on Earth

Ps. 72

Joyful, Lifting

Chorus: Klosner-Lan... ene Klosner

♩ = 52

Capo 2: C D F/C G/D C D G A G/B A/C#

1 C D F/C G/D C D G A C D F G

Lord, ev' - ry na - tion on earth Lord, ev' - ry

4 C D G A C D F D/F G7 A7 Am Bm F G

na-tion on earth with - dore you, a -

7 C/G D/A G A D C G/A G/B C Csus4 C
D A9/B A/C# D Dsus4 D

turnaround into repeated refrains and interlude into verses

D.S. Lord!

G/D Verse chords (Psalm Tone 1 or 2), Piano/Guitar:

Em7 | A | F#7 (aug)* | Bm | Em7 | G7sus4 |

Verse chords (Psalm Tone 1 or 2), Guitar, capo 2:

C | G | Dm7 | G | E7 (aug)* | Am | Dm7 | G7sus4 |

*augmented chord is optional

The G/D (A, A9/B, A/C#) in the intro and turnaround can be played on guitar in a few different ways: simply play an A chord, then G (all open strings), then back on; **or** the following progression:

234 2 1 2 3

Lord, Every Nation on Earth

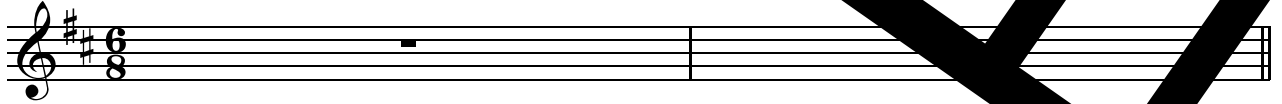
Ps. 72

Joyful, Lifting

♩ = 52

Cherubinosner-Lane/Sene Klosner
[O Come, O Ye Faithful] John F. Wade
Fr. Peter: Canon Frederick Oakeley

-2



NOTE: No harmonies/descants until after 1st verse; follow Soprano 1 line for melody. See format on next page.

1

S2 Desc. come, let us a - dore Him, O come, let us a -

melody on S1 line

S1/A Lord, ev' - ry nation on earth, Lord, ev' - ry

T/B Lord, ev' - ry nation on earth, Lord, ev' - ry

4

S2 Desc. dore Him, O come, let us a - dore Him,

S1/A na - tion on earth will a - dore you, (a) a -

T/B on earth will a - dore you, a -

Lord, Every Nation on Earth - Ps. 72

D.S.

1. turnaround into repeated refrain and interlude into verses | 2. Final

7

S2 Desc. Christ the Lord! O

S1/A dore you, Lord! Lord!
dore you, Lord! Lo

T/B dore you, Lord!

Format:

- Solo cantor refrain melody*
- Choir and congregation in **unison** (melody) refrain
- Solo cantor verse
- Choir and congregation refrain with harmony (wait to add descant until after 2nd verse or later)
- [Continue thru multiple verses with harmonized refrains]
- End with repeat of harmonized refrain (optional)

*The melody line is the soprano 1 part (male cantor sings an octave below).

Lord, Every Nation on Earth Verses
Ps. 72:1-2, 7-8, 10-11, 12-13 / Psalm Tones 1 & 2 in D
Epiphany of the Lord

Freely chanted, non-metered, solo cantor only

Cherub Klosner-Larsene Klosner

Capo 2: C
 D

PT 1/2*
 *opt. lower melody

1. O God, with your judgment en - dow the king, and with your justice, crown the king's son;
 2. Justice shall flower in his days, and profound peace, till the moon be no more.
 3. The kings of Tarshish and the Isles shall of - fer gifts; the kings of Arabia and Seba shall bring trib - ute.
 4. For he shall rescue the poor when he cries out, the afflicted when he has no one to help him.

G A Dm⁷ Em⁷ G A

Piano

3

1/2

E⁷aug F⁷aug Am⁷ Dm⁷sus⁴ Em⁷sus⁴

1. He shall govern your peo - ple with just-ice your af - flict - ed ones with
 2. May he rule from the sea to the sea, and from the River to the ends of the
 3. All kings shall bow down before him, all na - tions shall
 4. He shall have pity for the lowly and the poor, and he shall save the lives of the poor he shall

Pno.

♩. = 52

5

G⁷sus A⁷sus⁴ tempo G G G⁹/A G/B A A⁹/B A/C[#]

1. judg - ment
 2. earth.
 3. serve him.
 4.

Pno.

To m. 1 of refrain...

Lord, Every Nation on Earth Verses
 Ps. 72:1-2, 7-8, 10-11, 12-13 / Psalm Tones 1 & 2 in D
 Common psalm for the week of Epiphany

Freely chanted, non-metered, solo cantor only

Cherub Klosner-Larson Gene Klosner

Capo 2: C
 D

PT 1/2*
 *opt. lower melody

G Dm7
 A Em7

G
 A

1. O God, with your judgment en - dow the king, and with your justice crown the king's son;
 2. Justice shall flower in his days, and profound peace, till the moon be no more.
 3. The kings of Tarshish and the islands shall of - fer gifts; the kings of Arabia and Seba shall bring trib-ute.
 4. For he shall rescue the poor when he cries out, the afflicted when he has no one to help him.

Piano

3

E7aug
 F7aug

Am7

Dm7sus4
 Em7sus4

1/2

1. He shall govern your peo - ple with just - ice and your af - flict - ed ones with
 2. May he rule from the sea to the sea and from the River to the ends of the
 3. All kings shall bow before him, and all na - tions shall
 4. He shall have pity for the lowly and the poor, and the lives of the poor he shall

Pno.

♩. = 52

5

G7sus
 A7sus4

tempo

G
 A

G G/A G/B
 A A9/B A/C#

1/2

1. judg - ment
 2. earth.
 3. serve him.
 4.

Pno.

To m. 1 of refrain...

Lord, Every Nation on Earth Verses

Ps. 72:1-2, 3-4, 7-8 / Psalm Tones 1 & 2 in D
Tuesday after Epiphany (or January 8)

Freely chanted, non-metered, solo cantor only

Cherubim Klosner-Lane, Gene Klosner

Capo 2: C
D

PT 1/2*
*opt. lower melody

1. O God, with your judgment en - dow the king, and with your justice,
2. The mountains shall yield peace for the peo - ple, and the hills
3. Justice shall flower in his days, and profound peace, till the moon be no more.

G A Dm⁷ Em⁷ G A

Piano

3

1/2

1. He shall govern your peo - ple with just - ice and your af - flict - ed ones with
2. He shall defend the afflicted a - nd he shall save the chil - dren of the
3. May he rule from sea to sea, and from the River to the ends of the

E⁷aug F⁷aug Am⁷ Bm⁷ Dm⁷sus⁴ Em⁷sus⁴

Pno.

♩. = 52

5

1/2

1. judg - me
2. poor.
3. earth.

G⁷ A⁷sus⁴ G A G G⁹/A G/B A A⁹/B A/C[#]

Piano

To m. 1 of refrain...

Lord, Every Nation on Earth Verses

Ps. 72:1-2, 10, 12-13 / Psalm Tones 1 & 2 in D
Wednesday after Epiphany (or January 9)

Freely chanted, non-metered, solo cantor only

Cherubim Klosner-Larsene Klosner

Capo 2: C
D

PT 1/2*
*opt. lower melody

G A Dm⁷ Em⁷ G A

1. O God, with your judgment en - dow the king, and with your justice, and your af - flict - ed ones with
2. The kings of Tarshish and the Isles shall _____ bring
3. For he shall rescue the poor when he cries out, and the afflicted when he has no one to help him.

Piano

3

E⁷aug F⁷aug

1/2

1. He shall govern your peo - ple with just - ice and your af - flict - ed ones with
2. the kings of Arabi - a and the Is - ra - e - lites shall _____ bring
3. He shall have pity for the lowly and the poor, and he shall _____ the lives of the poor he shall

Pno.

♩ = 52

5

G⁷sus⁴ A⁷sus⁴ *tempo* G A G G/A G/B A A⁹/B A/C#

1/2

judg - ment...
2. trib - ute...
3. sa...

Pno.

To m. 1 of refrain...

Lord, Every Nation on Earth Verses

Ps. 72:1-2, 14 and 15bc, 17 / Psalm Tones 1 & 2 in D
Thursday after Epiphany (or January 10)

Freely chanted, non-metered, solo cantor only

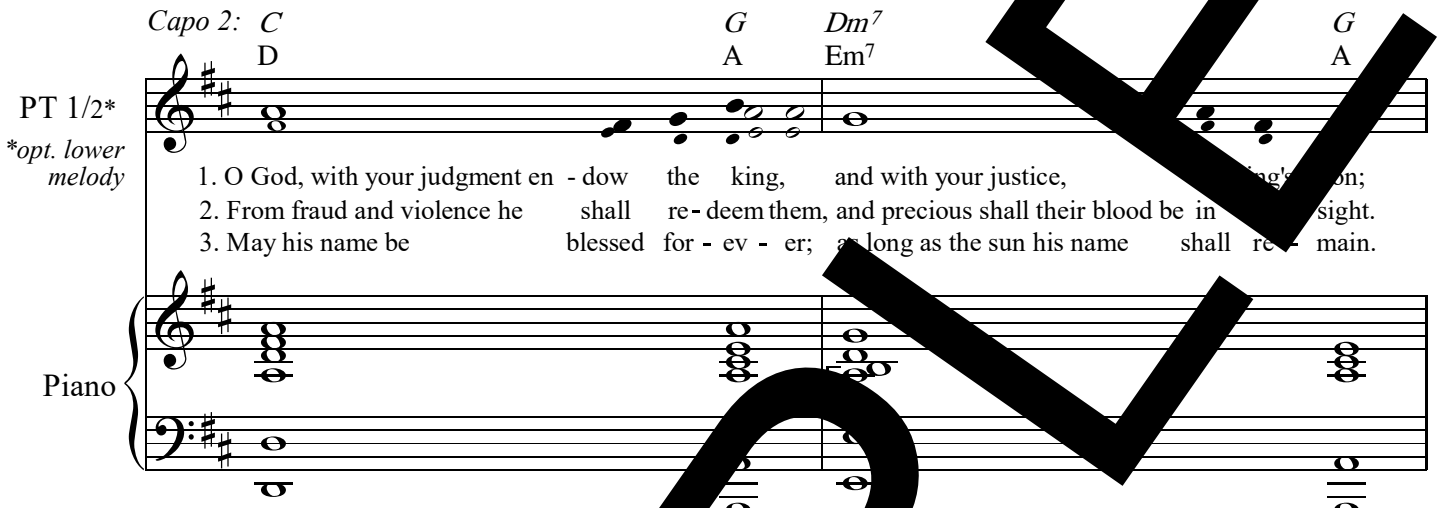
Cherubim Klosner-Larsene Klosner

Capo 2: C
D G Dm⁷ G
A A Em⁷ A

PT 1/2*
*opt. lower melody

1. O God, with your judgment en - dow the king, and with your justice,
2. From fraud and violence he shall re - deem them, and precious shall their blood be in
3. May his name be blessed for - ev - er; as long as the sun his name shall re - main.

Piano

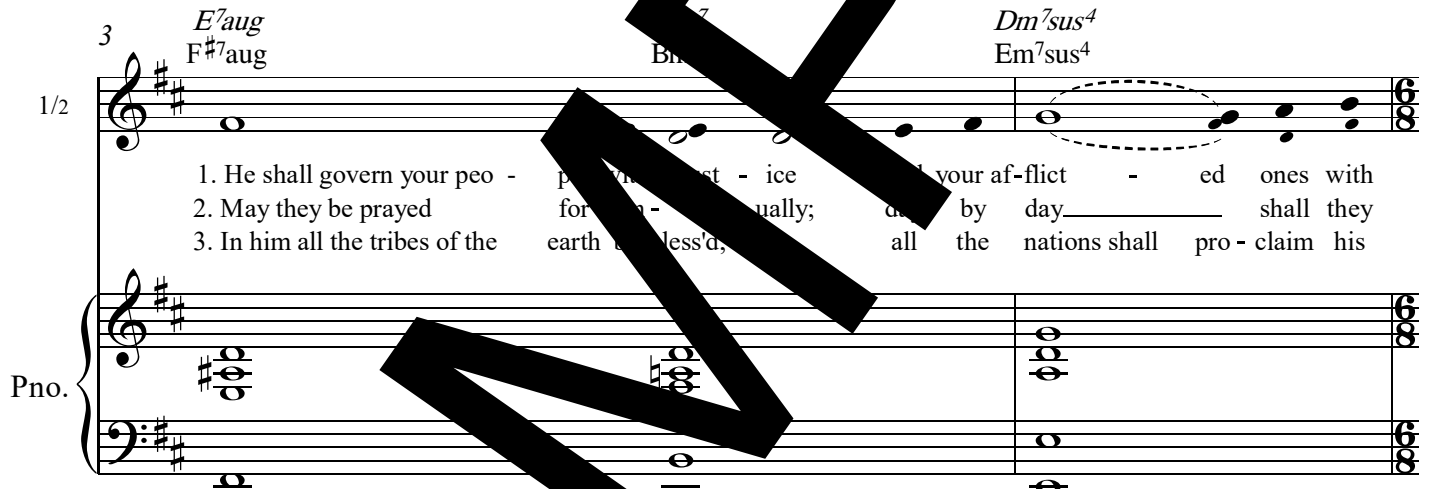


3
1/2

E⁷aug F⁷aug Bm⁷ Dm⁷sus⁴ Em⁷sus⁴

1. He shall govern your peo - ple with just - ice and your af - flict - ed ones with
2. May they be prayed for - equally; day by day shall they
3. In him all the tribes of the earth be bless'd, all the nations shall pro - claim his

Pno.



♩. = 52
5
1/2

G⁷sus⁴ A⁷sus⁴ tempo G G G⁹/A G/B
A A A⁹/B A/C[#]

1. judg - ment
2. bless him.
3. hap - piness.

Pno.



To m. 1 of refrain...

Lord, Every Nation on Earth

Ps. 72

Cherolyn Klosner-Lane/Gene Klosner

Lord, ev' - ry na - tion on earth, Lord, ev' - ry na - tion on earth
will a - dore you, a - dore you, Lord!

The image shows a musical score for the hymn 'Lord, Every Nation on Earth'. It consists of two staves of music in G major (one sharp) and 6/8 time. The melody is simple and repetitive, with lyrics written below the notes. A large, diagonal watermark 'SAMPLE' is overlaid on the score.

Refrain Text Copyright © 1968, 1981, 1997, International Committee on English in the Liturgy, Inc. (ICEL). All rights reserved. Used with permission.
Music Copyright © 1999 Light the Fire! Music (ASCAP). All rights reserved. www.LightTheFireMusic.com

Use for:

Epiphany of the Lord ABC (xmepABC)

Common Psalm for Epiphany (xmepcom)

Tues-Thur after Epiphany (xmepTu; xmepTh) (Oct 8-10*: xmep0108; xmep0109; xmep0110)

*when Epiphany is celebrated on January 6

Use with Psalm Tone 1 or 2 in D

Text version:

Lord, Every Nation on Earth (Ps. 72) (Cherolyn Klosner-Lane/Gene Klosner)

Lord, every nation on earth, Every nation on earth will adore you, adore you, Lord. [2x]

Psalm refrain Copyright © 1968, 1981, 1997, International Committee on English in the Liturgy, Inc. (ICEL). All rights reserved.
Music Copyright © 1999 Light the Fire! Music (ASCAP). All rights reserved. Used with permission.

This edition is USCC approved and uses Verbatim Text on refrain and verses.

Port usage to CCLI and/or eLicense.

CCLI Song #714

eLicense Song ID: tel-072