



# Psalm 45: The Queen Stands at Your Right Hand

Music by Luke D. Rosen

For Cantor, SATB Choir, Piano, Guitar

Instrument Parts:

Flute  
Clarinet in B<sup>b</sup>  
Alto Saxophone  
Tenor Saxophone  
Horn in F  
Trumpet in B<sup>b</sup> I & II  
Trombone I & II  
Tuba  
Violin I & II

Responsorial Psalm for:

August 15: The Assumption of the Blessed Virgin Mary

# Psalm 45: The Queen Stands at Your Right Hand

**Firmly** ♩ = 100  
**Introduction**

Piano

Chords: E, E/G#, A, C#m, E, A

Pno.

Chords: C#m7, C#m7/B, A, C

Cantor Refr.

Chords: E, E//, E, E/G#, A, C#m, E, A

The queen stands at your right hand, arrayed in gold. The

Cantor

Chords: C#m7, C#m7/B, A, C, D, E, E//

queen stands at your right hand, arrayed in gold.

Choir

The

Pno.

Refrain

17 E E/G# A C#m E A

Choir queen stands at your right hand, ar - rayed

Pno.

21 C#m7 C#m7/B A D E E//

Choir queen stands at your right hand, rayed in gold.

Pno.

Verse 1,2,3  
Freely

E// Cmaj7// D//

Choir 1. The daughter of kings are those whom you favor. On your right stands the queen in gold of Oph -  
 2. Listen, O daughter; pay heed and give ear; for - get your own people and your father's  
 3. So will they long desire your beauty. He is your lord, pay homage to  
 4. They are comforted amid gladness and joy; they pass within the palace of the

**a tempo**

**Final Refrain**

26 E E/G# C D E E/G# A

Choir  
phir.  
house.  
him.  
king. The queen stands at your hand,

Pno.

30 C#m E A C#m C#m7/B A

Choir  
rayed in gold. The queen stands at your right hand, ar -

Pno.

34 C D E E// C// D// E//

Choir  
rayed in gold.

Pno.

**molto rit.**

Choir  
rayed in gold.

Pno.

# Psalm 45: The Queen Stands at Your Right Hand

Luke D. Rosen

**Firmly** ♩ = 100  
**Introduction**

Piano

5

C#m7 C#m7/B A C D

**Cantor Refrain**

8

E E// E E/G# A E A

The queen stands at your right hand, ar - rayed in gold. The

13

C#m7 C#m7/B A D E E//

queen stands at your right hand, ar - rayed in gold.

Choir

The

**Refrain**

17

E E/G# C#m E A

queen stands at your right hand, ar - rayed in gold. The

21

C#m7 C#m7/B A C D E E//

queen stands at your right hand, ar - rayed in gold.

Verse 1,2,3,4  
Freely

25 E// Cmaj7// D//

Choir

1. The daughters of kings are those whom you favor. On your right hand stands the queen of gold of Oph -  
 2. Listen, O daughter; pay heed and give ear; for get down people in your father's  
 3. So will the king desire your beauty. He is your lord, pay homage to  
 4. They are escorted amid gladness and joy; they pass within the palace of the

26 a tempo Final Rehearsal E E/G# C D E/G#

Choir

phir.  
house.  
him.  
king.

stands at your right hand, ar -

30 C#m E A C#m7 C#m7/B A

Choir

rayed in gold. The queen stands at your right hand, ar -

34 D E E// C// D// E//

Choir

rayed in gold.

## A Note on instrumentation for any Psalm Setting by Luke D. Rosen

1. Each psalm may be played with any combination of instruments with no obligation to use all instruments at all.
2. No dynamic markings are given in the scores: the composer wishes for the conductor or group/director to take liberties with dynamics and have them grow organically from the ensemble and the space.
3. The Horn in F and Trombone I parts double each other (unless otherwise noted in the score parts):

For Brass Quartet, use Trumpet I/II and Trombone I/II.

For Brass Quintet, use Trumpet I/II, Horn in F, Trombone II, and Tuba.

SAMPLE

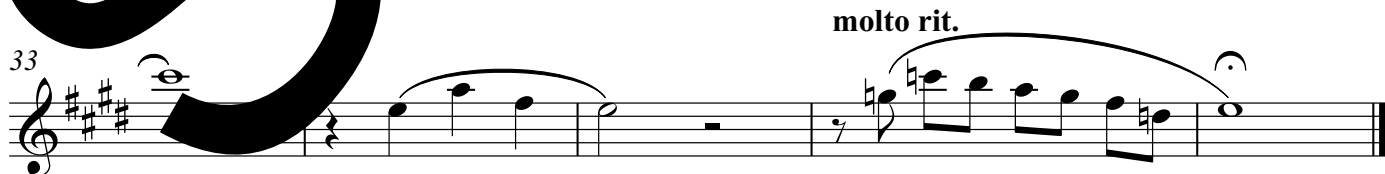
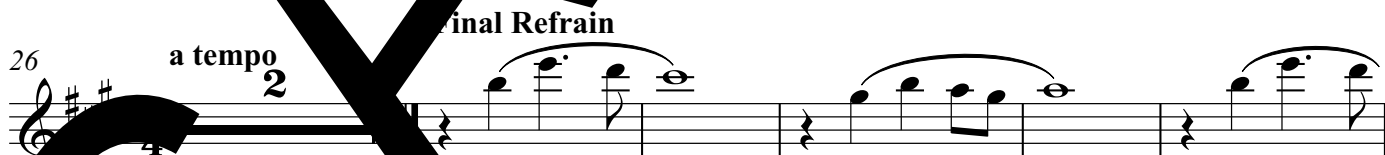
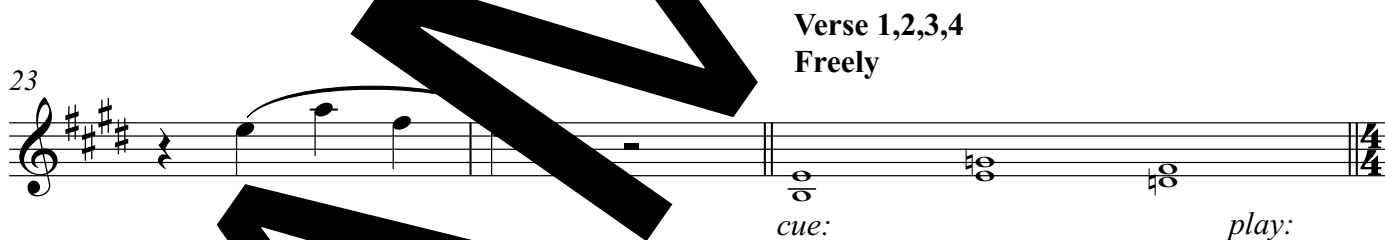
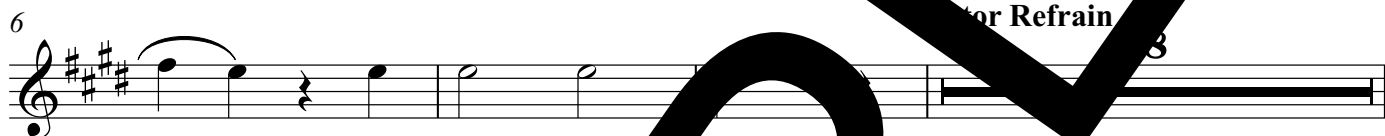
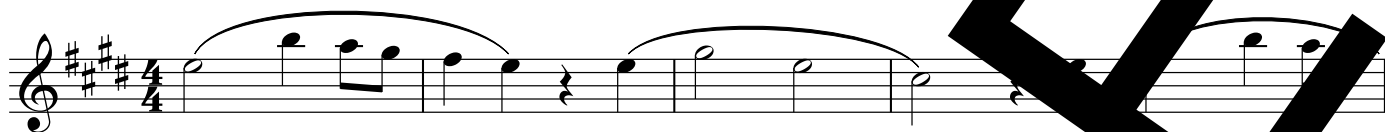
Flute

# Psalm 45: The Queen Stands at Your Right Hand

Luke D. Rosen

Revised Grail Psalter  
Ps 45: 10,11,12ab,16 (10b)

**Firmly** ♩ = 100  
**Introduction**





Clarinet in B $\flat$   
Revised Grail Psalter  
Ps 45: 10,11,12ab,16 (10b)

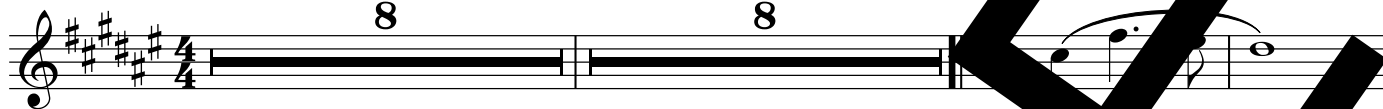
# Psalm 45: The Queen Stands at Your Right Hand

Luke D. Rosen

**Firmly**  $\text{♩} = 100$   
**Introduction**

**Cantor Refrain**

**Refrain**



**Verse 1,2,3,4**  
**Freely**

**a tempo** **Final Refrain**



**SAMPLE**

Alto Saxophone

Revised Grail Psalter  
Ps 45: 10,11,12ab,16 (10b)

# Psalm 45: The Queen Stands at Your Right Hand

Luke D. Rosen

**Firmly** ♩ = 100  
**Introduction** 8      **Cantor Refrain** 8      **Refrain**

19

25      **Verse 1,2,3,4**  
**Freely**      **tempo 2**      **Final Refrain**

*cue:*      *play:*

31

**molto rit.**

**SAMPLE**

Tenor Saxophone

Revised Grail Psalter  
Ps 45: 10,11,12ab,16 (10b)

# Psalm 45: The Queen Stands at Your Right Hand

Luke D. Rosen

**Firmly** ♩ = 100  
**Introduction**

8 Cantor Refrain 7

17 **Refrain**

23 **Verse 3,3,4**  
**Freely**

*cue:* *play:*

26 **Final Refrain**

*a tempo*

32 **molto rit.**

Baritone Saxophone

# Psalm 45: The Queen Stands at Your Right Hand

Revised Grail Psalter  
Ps 45: 10,11,12ab,16 (10b)

Luke D. Rosen

Firmly ♩ = 100  
Introduction

Cantor Refrain

8 7

Refrain

17

1,2,3,4  
Freely

23

cue:

play:

Final Refrain

26 a tempo

molto rit.

32

Horn in F

Revised Grail Psalter  
Ps 45: 10,11,12ab,16 (10b)

# Psalm 45: The Queen Stands at Your Right Hand

Luke D. Rosen

**Firmly** ♩ = 100  
**Introduction** 8 **Cantor Refrain** 7

17 **Refrain**

22 **Verse 1,2,3,**  
**Freely**

*cue:* *play:*

26 **a tempo** **Final Refrain**

32 **molto rit.**

Trumpet in B $\flat$  I II

# Psalm 45: The Queen Stands at Your Right Hand

Revised Grail Psalter  
Ps 45: 10,11,12ab,16 (10b)

Luke D. Rosen

**Firmly** ♩ = 100  
**Introduction**

**Cantor Refrain**

17 **Refrain**

22 **Verse 1,2,3,4**  
**Freely**

26 **Final Refrain**  
*a tempo*

32 **molto rit.**

Trombone I II

Revised Grail Psalter  
Ps 45: 10,11,12ab,16 (10b)

# Psalm 45: The Queen Stands at Your Right Hand

Luke D. Rosen

**Firmly** ♩ = 100  
**Introduction**

8                      Cantor Refrain                      7

17                      **Refrain**

22                      Verse 1,2,3,4  
                              Freely

cue:                      play:

26                      a temp                      **Final Refrain**

32                      molto rit.

Ps 45: 10,11,12ab,16 (10b). Refrain text © 1969, 1981, 1997, ICEL. All rights reserved. Used with permission.  
Verse text © 2010, The Revised Grail Psalms, Conception Abbey and the Grail. All rights reserved. Used with permission.  
Music © 2013, Luke D. Rosen. All rights reserved.

Tuba

# Psalm 45: The Queen Stands at Your Right Hand

Revised Grail Psalter  
Ps 45: 10,11,12ab,16 (10b)

Luke D. Rosen

**Firmly** ♩ = 100  
**Introduction**

**Cantor Refrain**

8

17 **Refrain**

23 **Verse 3,4**  
**Freely**

cue: play:

26 **a tempo** **Final Refrain**

32 **molto rit.**

**SAMPLE**



Violin I II  
Revised Grail Psalter  
Ps 45: 10,11,12ab,16 (10b)

# Psalm 45: The Queen Stands at Your Right Hand

Luke D. Rosen

**Firmly** ♩ = 100  
**Introduction**

6 **Cantor Refrain** 8

17 **Refrain**

22 **Verse 1,2,3,4**  
**Freely**

*cue:* *play:*

26 **a tempo** **Final Refrain**

33 **molto rit.**