

# Psalm 16: The Path of Life

Music by Luke D. Rosen

For Cantor, SATB Choir, Piano, Guitar

Instrument Parts:

Flute  
Clarinet in B<sup>b</sup>  
Alto Saxophone  
Tenor Saxophone  
Horn in F  
Trumpet in B<sup>b</sup> I & II  
Trombone I & II  
Tuba  
Violin I & II

Responsorial Psalm for:  
Third Sunday of Easter (A)

# Psalm 16: The Path of Life

Revised Grail Psalter

Luke D. Rosen

Ps 16: 1-2a,5,7-8,9-10,11 (11a)

Slowly, freely ♩ = 50

## Introduction

Piano

E(omit3)// D(omit3)//

Rhythmically ♩ = 70

Pno.

5 E(omit3)

## Cantor Refrain

Cantor

9 E(omit3) (omit3) E(omit3)

Lord, you will show us the path of life.

Pno.

Cantor

11 D(omit3) E(omit3)//

Lord, will show us the path of life.

Pno.

Refrain

13 Lord, you will show us the path of life.

Choir

(ah) Lord, you will show us the path of life.

Pno.

15 Lord, you will show us the path of life.

Choir

life. you will show us the path of life.

Pno.

Verse 1,2,3,4

17 E(omit3) D(omit3) E(omit3)

Pre - serve me, O God, for in you I take re - fuge. I say to the LORD, "You are my—

I will bless the LORD who gives me— coun - sel, whose e - ven at night di - rects my heart. I keep the

And so, my heart re - joic - es, my soul is —, — when my flesh — shall rest — in hope.

You will show me — of — life,

Choir

Pno.

19

D(omit3)

(omit3)//

Musical staff with treble clef, containing a sequence of eighth and sixteenth notes.

Lord." O LORD, it is you who are my por - tion and cup; you your-self to se - cure me...

Musical staff with treble clef, containing a sequence of eighth and sixteenth notes.

LORD be - fore me al - ways; with him at my right hand, I shall not be moved.

Musical staff with treble clef, containing a sequence of eighth and sixteenth notes.

\_ For you will not a - ban - don my soul in hell, nor let your ho - ly one see cor - ruption.

Musical staff with treble clef, containing a sequence of eighth and sixteenth notes.

the full - ness of joy\_ in your pres - ence at your right hand, bliss for - e - ver.

Choir

Musical staff for choir with treble clef, containing notes and rests.

Ah\_ ah\_ ah\_

Musical staff for choir with bass clef, containing notes and rests.

Pno.

Musical staff for piano with treble and bass clefs, containing notes and rests.

v.

SAMPLE

Coda

21 Lord, you will show us the path of life.

ah Lord, you will show us the path of life.

Lord, you will show us the path of life.

Choir

Pno.

23 Lord, you will show us the path of life.

life. you will show us the path of life.

Lord, you will show us the path of life.

Choir

Pno.

accel.

25 Lord, you will show us the path of life.

Choir

life. Lord, you will show us the path of life.

Pno.

(repeat ad libitum)

27 Lord, you will show us the path of life.

Choir

life. you will show us the path of life.

Pno.

29 Lord, you will show us the path of life.

life. Lord, you will show us the path of life.

Choir

Pno.

D(omit3) E(omit3)

31 Lord, you will show us the path of life.

life. Lord, you will show us the path of life.

Choir

Pno.

D(omit3) E(omit3)//



# Psalm 16: The Path of Life

Revised Grail Psalter

Luke D. Rosen

Ps 16: 1-2a,5,7-8,9-10,11 (11a)

Slowly, freely ♩ = 50

## Introduction

Piano

E(omit3)// D(omit3)//

Rhythmically ♩ = 70

Pno.

5 E(omit3)

## Cantor Refrain

Cantor

9 E(omit3) (omit3) E(omit3)

Lord, you will show us the path of life.

Pno.

Cantor

11 D(omit3) E(omit3)//

Lord, you will show us the path of life.

Pno.

Refrain

13 Lord, you will show us the path of life.

Choir

(ah) Lord, you will show us the path of

Lord, you will show us the path of life.

15 Lord, you will show us the path of

Choir

life. Lord, you will show us the path of

Lord, you will show us the path of life.

Verse 1,2,3,4

17 Pre - serve me, O God, for I take re-fuge. I say to the LORD, "You are my

I will bless the LORD who gives me coun sel, who e - ven at night di-rects my heart. I keep the

And so, my heart is joy - es, my soul is glad; e - ven my flesh shall rest in hope.

will show me the path of life,

Choir

life.

19

D(omit3)

E(omit3)//



Lord." O LORD, it is you who are my por - tion and cup; you your - self se - cure my



Lord be - fore me al - ways; with him at my right hand, I shall not be moved.

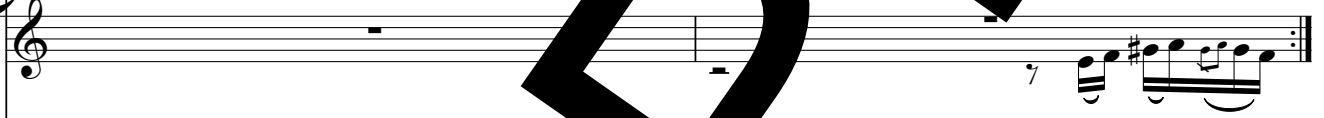


For you will not a - ban - don my soul to hell, nor let any - ly one see cor - rup - tion

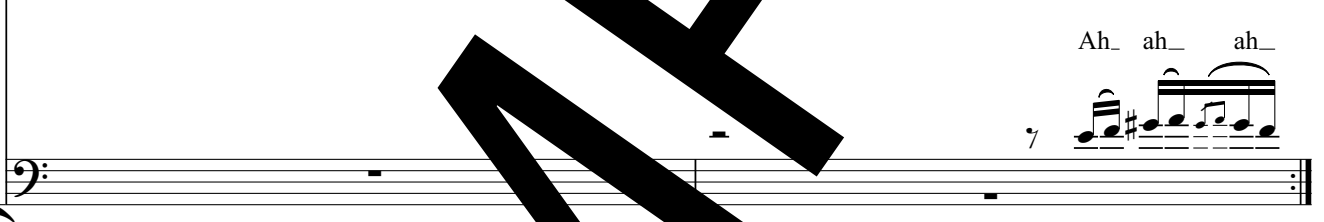


the full - ness of joy in your pre - sence, at my right hand, for ever.

Choir

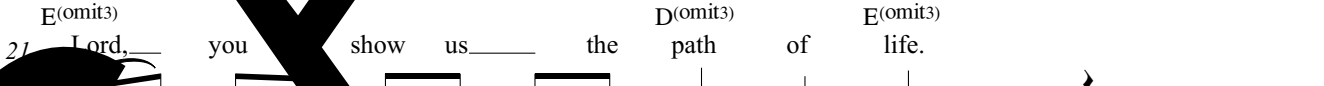


Ah\_ ah\_ ah\_



Ah\_ ah\_ ah\_

Coda



Lord, you show us the path of life.



Lord, you will show us the path of life.



Lord, you will show us the path of life.

SAMPLE

accel.

23 Lord, you will show us the path of life.

life. Lord, you will show us the of

Choir

Lord, you will show us the path of life.

D(omit3) E(omit3)

25 Lord, you will show us the path of life.

life. Lord, you will show the path of

Choir

Lord, you will show the path of life.

D(omit3) E(omit3)

27 Lord, you will show us the path of life.

life. Lord, you will show us the path of

Choir

Lord, you will show us the path of life.

ad libitum)

D(omit3) E(omit3)

29 Lord, you will show us the path of life.

Choir

life. Lord, you will show us the of

Lord, you will show us the path of life.

31 Lord, you will show us the path of life.

Choir

life. Lord, you will show us the path of life.

Lord, you will show us path of life.

SAMPLE

## A Note on instrumentation for any Psalm Setting by Luke D. Rosen

1. Each psalm may be played with any combination of instruments with no obligation to use all instruments at all.
2. No dynamic markings are given in the scores: the composer wishes for the conductor or group/director to take liberties with dynamics and have them grow organically from the ensemble and the space.
3. The Horn in F and Trombone I parts double each other (unless otherwise noted in the score parts):

For Brass Quartet, use Trumpet I/II and Trombone I/II.

For Brass Quintet, use Trumpet I/II, Horn in F, Trombone II, and Tuba.

**SAMPLE**

Flute

# Psalm 16: The Path of Life

Revised Grail Psalter

Ps 16: 1-2a,5,7-8,9-10,11 (11a)

Slowly, freely ♩ = 50  
Introduction

Luke D. Rosen

5 Rhythmically ♩ = 70 Cantor Refrain

12 Refrain

16 1,2,3,4

20 5,6,7,8,9,10,11

24 accel.

27 (repeat ad libitum)

30

Clarinet in B $\flat$

# Psalm 16: The Path of Life

Revised Grail Psalter

Luke D. Rosen

Ps 16: 1-2a,5,7-8,9-10,11 (11a)

Slowly, freely  $\text{♩} = 50$   
Introduction

Rhythmically  $\text{♩} = 70$

Cantor Refrain

5

12

16

21

26

29



Alto Saxophone

Revised Grail Psalter

Ps 16: 1-2a,5,7-8,9-10,11 (11a)

# Psalm 16: The Path of Life

Luke D. Rosen

Slowly, freely ♩ = 50  
Introduction

5 **Rhythmically** ♩ = 70 **Cantor Refrain**

12 **Refrain**

16 **Verse 2,3,4**

21 **Coda** **accel.** . . . . .

(repeat ad libitum)

29

Tenor Saxophone

# Psalm 16: The Path of Life

Revised Grail Psalter

Ps 16: 1-2a,5,7-8,9-10,11 (11a)

Luke D. Rosen

Slowly, freely ♩ = 50  
Introduction

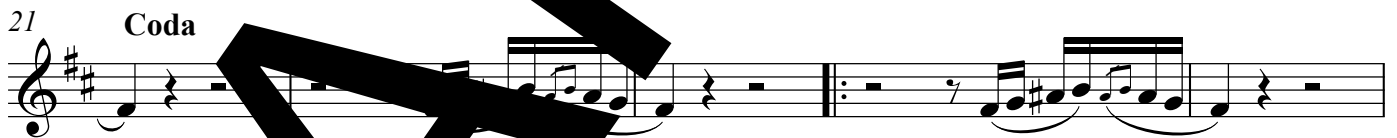


Rhythmically ♩ = 70

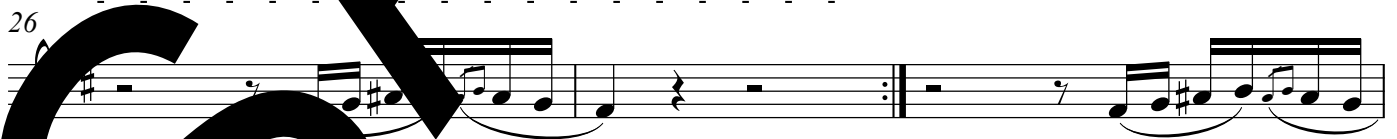
Cantor Refrain



accel. . . . .



(repeat ad libitum)



Horn in F

Revised Grail Psalter

Ps 16: 1-2a,5,7-8,9-10,11 (11a)

# Psalm 16: The Path of Life

Luke D. Rosen

Slowly, freely ♩ = 50  
Introduction

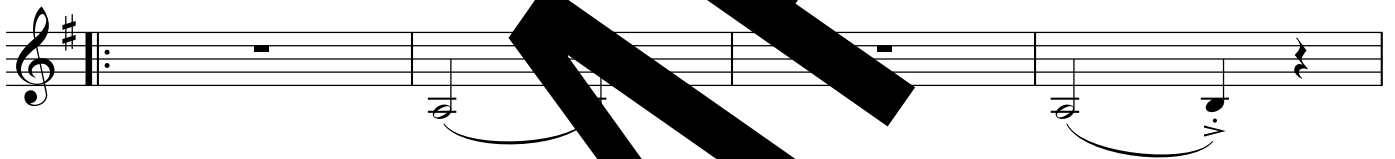


5 Rhythmically ♩ = 70  
2

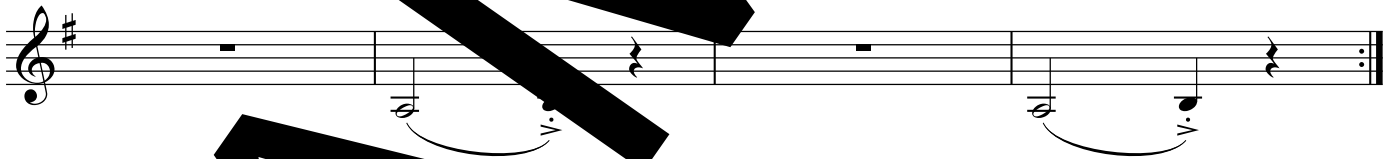
Cantor Refrain



13 Refrain

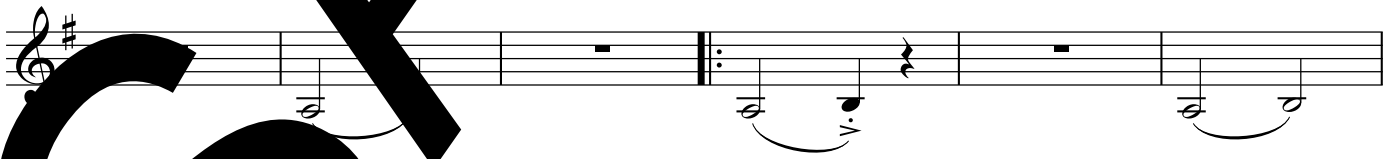


17 Verse 1,2,3,4

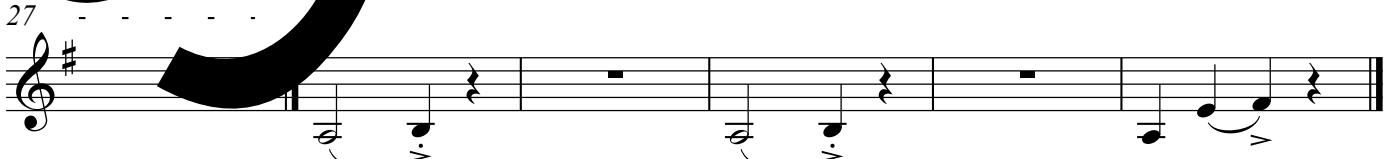


21 Coda

accel. . . . .



(repeat ad libitum)



Trumpet in B $\flat$  I II

# Psalm 16: The Path of Life

Revised Grail Psalter

Ps 16: 1-2a,5,7-8,9-10,11 (11a)

Luke D. Rosen

Slowly, freely  $\text{♩} = 50$

Introduction

Rhythmically  $\text{♩} = 70$

Cantor Refrain

5

Refrain

12

Verse 4

16

Coda

accel. . . . .

21

(repeat ad libitum)

26

29

Trombone I II

Psalm 16: The Path of Life

Revised Grail Psalter

Ps 16: 1-2a,5,7-8,9-10,11 (11a)

Luke D. Rosen

Slowly, freely ♩ = 50

Introduction

Musical staff for the Introduction section, starting with a bass clef and a 4/4 time signature. It contains a few whole notes with fermatas.

5 **Rhythmically** ♩ = 70 **Cantor Ref**

Musical staff for the Rhythmically section, starting with a bass clef and a 2/4 time signature. It features a series of eighth and quarter notes.

13 **Refrain**

Musical staff for the Refrain section, starting with a bass clef and a 4/4 time signature. It features a series of half notes with fermatas.

17 **Verse 1,2,3,4**

Musical staff for the Verse section, starting with a bass clef and a 4/4 time signature. It features a series of half notes with fermatas.

21 **Coda** *accel.* - - - - -

Musical staff for the Coda section, starting with a bass clef and a 4/4 time signature. It features a series of half notes with fermatas, followed by a double bar line and repeat sign.

(repeat *ad libitum*)

27

Musical staff for the final section, starting with a bass clef and a 4/4 time signature. It features a series of half notes with fermatas.

Tuba

# Psalm 16: The Path of Life

Revised Grail Psalter  
Ps 16: 1-2a,5,7-8,9-10,11 (11a)

Luke D. Rosen

Slowly, freely ♩ = 50  
Introduction

Rhythmically ♩ = 70

5

9 Cantor Refrain

13 Refrain

17 Verse 1,2,3,4

21 Coda

accel. . . . .

(repeat ad libitum)

26

29

Violin I II

Psalm 16: The Path of Life

Revised Grail Psalter

Ps 16: 1-2a,5,7-8,9-10,11 (11a)

Luke D. Rosen

Slowly, freely ♩ = 50  
Introduction

Rhythmically 70  
norm.

9 Introduction

9 Introduction

9 Cantor Refrain

9 Cantor Refrain

13 Refrain

13 Refrain

17 Verse 1,2,3,4

17 Verse 1,2,3,4

21 Coda

21 Coda

(repeat ad libitum)

26

26

29

29