

**150**  
**PSALMS**  
*for Singing*

*Juliana Howard*

# 150 Psalms *for Singing*

Juliana Howard

Based on texts from *Psalms for Praying: An Invitation to Wholeness*  
by Nan C. Merrill

These short mantras came out of ten years of daily meditation on Nan Merrill's poetic inclusive rendition of the psalms. They are devotional, simple and easy to sing. I have used them in small prayer settings and liturgies with both adults and children. It is my hope that you will let the songs become yours too, opening your heart, awakening you to wholeness, and drawing you deeper into love.

Each mantra may be sung several times over. Perhaps the song leader may start with a hum and then introduce the text, which will be gradually picked up and sung by all. Some pieces have been written as canons or rounds, divided into two voices, the second voice entering a few measures after the first.

The songs may be sung as psalm responses, or as reflections on readings, verses from Scripture, or in whatever situation the imagination deems appropriate. It is preferred that they be sung unaccompanied, but suggested chords have been provided for simple accompaniment by guitar or keyboard. While I have indicated my preference for simplicity, I have approved of certain chords being provided in parentheses to add color to my musical settings.

I am grateful for the collaborative energies of my friend Tony Barr, who not only engraved the music but offered suggestions on melodies and harmonies.

**music** © 2017, 2021 Juliana Howard

**texts** © 2007 Nan C Merrill, drawn from the Psalms

Adapted from *Psalms for Praying: An Invitation to Wholeness*.

Continuum International Publishing Group, New York, London, 2008.

Used with permission.

**Graphics & typesetting** by Tony Barr, Jabulani Music

**Published by New World Music, 329 7th Ave SE Apt 301, St Joseph, MN 56374**

## Table of Contents

Psalm 1: Be Like a Tree	4	Psalm 51: Create in Me a Clean Heart	20
Psalm 2: Awaken All	4	Psalm 52: Blessed are Those	20
Psalm 3: Rise Up in Me	4	Psalm 53: My Courage Is in You	21
Psalm 4: Make Peace	5	Psalm 54: In Your Holy Mercy	21
Psalm 5: Lead Me	5	Psalm 55: Listen to Me	21
Psalm 6: Surround Me	5	Psalm 56: I Put My Trust in You	21
Psalm 7: Arise, O Beloved	6	Psalm 57: In the Shadow of Your Wings	22
Psalm 8: How Powerful Is Your Name	6	Psalm 58: Open Our Eyes	22
Psalm 9: Tell the Story	6	Psalm 59: O Blessed Heart	22
Psalm 10: Awaken, O Love	7	Psalm 60: Walk With Me	22
Psalm 11: In My Beloved	7	Psalm 61: You Fill Me with Abiding Love	23
Psalm 12: Come to Our Aid	7	Psalm 62: For You Alone	23
Psalm 13: Come, O Beloved	8	Psalm 63: Open Your Hearts to Love	23
Psalm 14: We Are All One	8	Psalm 64: Ponder the Power	23
Psalm 15: Who Will Dwell With You	8	Psalm 65: You Are the Hope	24
Psalm 16: You Are My Beloved	9	Psalm 66: I Enter Your Heart	24
Psalm 17: Be Thou My Feet	9	Psalm 67: Love's Grace	24
Psalm 18: May We Walk with You	9	Psalm 68: I Will Shatter the Fears that Bind	24
Psalm 19: Cleanse Me	10	Psalm 68: Reach Into Our Hearts	25
Psalm 20: May the Name of Love	10	Psalm 69: Let Me See with the Heart's Eye	25
Psalm 21: You Root Out My Fears	10	Psalm 70: Let Me Begin Anew	25
Psalm 22: Come Close to Me	11	Psalm 71: In Your Compassion	25
Psalm 23: You Are My Shepherd	11	Psalm 72: May Your Glory Fill the Earth	26
Psalm 24: Let the Holy One Come In	11	Psalm 73: I Was Blind	26
Psalm 25: Lead Me in Your Truth	12	Psalm 74: Yours Is the Day ,	26
Psalm 26: May My Heart	12	Psalm 75: Our One Desire	26
Psalm 27: Teach Me to Be Love	12	Psalm 76: You Break down Our Walls	27
Psalm 28: Heart of My Heart	13	Psalm 77: Can You Wonder	27
Psalm 29: The Voice of Love	13	Psalm 78: Listen Long	27
Psalm 30: Now We Are Dancing	13	Psalm 79: Pour Out Your Love	27
Psalm 31: You Are My Life	14	Psalm 80: Teach Us to Love	28
Psalm 32: I Surrender My Life	14	Psalm 81: I Am Your Very Breath	28
Psalm 33: All Is Held Together	14	Psalm 82: Arise, Awaken	28
Psalm 34: Come and Hear	15	Psalm 83: Fear Is Rampant	28
Psalm 35: Pour Forth your Strength	15	Psalm 84: All That Is Within Me	29
Psalm 36: In You	15	Psalm 85: Restore Us, Revive Us	29
Psalm 37: Live in Love	15	Psalm 86: Teach Me Your Ways	29
Psalm 38: For You Alone	16	Psalm 87: City of Light	30
Psalm 39: I Am Made New	16	Psalm 88: Merciful Redeemer	30
Psalm 40: I Abandon Myself	16	Psalm 89: Blessed Are Those	30
Psalm 41: You Are Not Beset	17	Psalm 90: Awaken Us	31
Psalm 42: My Hope Is in You	17	Psalm 91: I Will Deliver You	31
Psalm 43: You Are My Strength	17	Psalm 92: Gladden My Soul	31
Psalm 44: Rise Up	18	Psalm 93: You Reign	31
Psalm 45: Turn Your Feet	18	Psalm 94: Heart of Pure Fire	32
Psalm 46: Be Still	18	Psalm 95: You Are the Breathing Life of All	32
Psalm 47: Gather As One	19	Psalm 96: Be Guided By Love	32
Psalm 48: We Call on Your Name	19	Psalm 97: You Are the Heart	32
Psalm 49: Spirit of Truth	19	Psalm 98: Let the Voices of All People	33
Psalm 50: Search for the Voice	20	Psalm 99: Out of the Silence	33

Psalm 100: Open the Gates	33	Psalm 126: Restore Us, O Healer	40
Psalm 101: May I Be a Mirror	34	Psalm 127: Unless You Make Your Home	41
Psalm 102: Your Love Never Fails	34	Psalm 128: Peace Be Within You	41
Psalm 103: Bless the Beloved	34	Psalm 129: There Is Beauty	41
Psalm 104: O You Who Know All Hearts	35	Psalm 130: I Wait for You	41
Psalm 105: All That We Have	35	Psalm 131: Like a Child	42
Psalm 106: We Listen	35	Psalm 132: Enter Into the Silence	42
Psalm 107: Let Your Heart Be Pure	36	Psalm 133: How Good It Is	42
Psalm, 108: I Am In You	36	Psalm 134: Come Bask in the Light	42
Psalm 109: Love Me into Life	36	Psalm 135: To You	43
Psalm 110: Come Walk with Me	36	Psalm 136: Your Love Sustains Us	43
Psalm 111: Your Word Is Truth	37	Psalm 137: Too Long	43
Psalm 112: Blessed Are Those	37	Psalm 138: You Dwell In Me	43
Psalm 113: Sing Praises	37	Psalm 139: Search Me	44
Psalm 114: Befriend All That Is	37	Psalm 140: Guide Me	44
Psalm 115: May You Be Guided	38	Psalm 141: May Your Light Shine	44
Psalm 116: I Will Drink	38	Psalm 142: I Call To You	44
Psalm 117: Praises Be	38	Psalm 143: O Bringer of Joy	45
Psalm 118: Your Steadfast Love	38	Psalm 144: Awaken Us	45
Psalm 119: I Offer Myself	39	Psalm 145: Shine Out to the World	45
Psalm 120: Be Strong in Me	39	Psalm 146: Loose the Fetters of Fear	46
Psalm 121: In You	39	Psalm 147: Know We Are One	46
Psalm 122: Come to the Heart	39	Psalm 147: Life of All Life	46
Psalm 123: Have Mercy	40	Psalm 148: Praises Be	47
Psalm 124: Grant Us the Strength	40	Psalm 149: We Are In Harmony	47
Psalm 125: Enter the Garden	40	Psalm 150: Praise the Beloved	47
Psalm 126: Restore Us, O Healer	40	Index	48

# Be Like a Tree

*Psalm 1*

Dm Gm Dm Gm Dm

Be like a tree. Be like a tree. Be like a tree in all you do, give life!

Dm Gm Dm Gm Dm Dm

Be like a tree. Be like a tree. Be like a tree in all you do, give life!

# Awakened

*Psalm 2*

Em D(open) Em

A - wak - ened all who are liv - ing in dark - ness. You

Em D(open) Em

live in hearts as dwell in yours.

# Rise Up in Me

*Psalm 3*

Dm Gm Dm Gm C Dm

Rise up in me. Set me free. Trans - form my fears to love.  
Lift my head high. Hear my cry. Trans - form my fears to love.

# Make Peace

*Psalm 4*

F Gm7 F

Make peace with your fears, and trust in the Lord's com -  
 mune with the heart of your lips.

Detailed description: This block contains the first two staves of music for 'Make Peace'. The first staff starts with a treble clef, a key signature of one flat (Bb), and a 6/8 time signature. The melody consists of quarter notes: G4, A4, Bb4, C5, Bb4, A4, G4. Chords F and Gm7 are indicated above the staff. The second staff continues the melody with notes G4, F4, E4, D4, C4, Bb3, A3. Chords F and Gm7 are indicated above the staff.

# Lead Me

*Psalm 5*

Em Am/E (Em)

Lead me, O Lord, Be - lov - ed.

In your mer - cy, light - en my fears.

Detailed description: This block contains the first two staves of music for 'Lead Me'. The first staff starts with a treble clef, a key signature of one sharp (F#), and a 3/4 time signature. The melody consists of quarter notes: G4, A4, B4, C5, B4, A4, G4. Chords Em, Am/E, and (Em) are indicated above the staff. The second staff continues the melody with notes G4, F#4, E4, D4, C4, B3, A3. Chords Am/E, B, and Em are indicated above the staff.

# Surround Me

*Psalm 6*

(D) (C) (Bm)

Sur - round me with your heal - ing light, sur -  
 round me with your light.

Detailed description: This block contains the first two staves of music for 'Surround Me'. The first staff starts with a treble clef, a key signature of one sharp (F#), and a 4/4 time signature. The melody consists of quarter notes: G4, A4, B4, C5, B4, A4, G4. Chords (D), (C), and (Bm) are indicated above the staff. The second staff continues the melody with notes G4, F#4, E4, D4, C4, B3, A3. Chords (Am), D, and Em are indicated above the staff.

# Arise, O Beloved

*Psalm 7*

Em  
A - rise, O Be - lov - ed,  
Am D Em  
in your stead - fast lov

# How Powerful Is Your Name

*Psalm 8*

Dm C  
You made us in your image, you fill us with your  
Dm C C Dm  
love. How pow - er - ful is your name!

# Tell the Story

*Psalm 9*

CANON

I G C G II C G  
Tell the sto - of Love's way. Be glad and dance with joy! Sing  
G G C G  
prais - es to the Name a - bove all names. Be glad and dance with joy.

# Awaken, O Love

*Psalm 10*

CANON

**I** Em

A - wak - en, O Love, re - turn to our side.

**II**

May my will be one with your will. wak - en, O Love, re -

turn to our side. May my will be one with your will.

# In My Beloved

*Psalm 11*

CANON

**I** Bm (clap) Em A **II** Bm (clap) (clap) (clap)

In my beloved I make my re - treat.

Bm (clap) A Bm (clap) (clap) (clap)

I see the face in ev - 'ry one that I meet.

# Come to Our Aid

*Psalm 12*

Dm

Come to our aid, O Be - lov - ed. O be -

A Dm

lov - ed, come to our aid.



# Come, O Beloved

*Psalm 13*

CANON

Musical score for 'Come, O Beloved' (Psalm 13). It features two staves of music in a canon format. The first staff begins with a treble clef, a key signature of one flat (B-flat), and a common time signature (C). It includes two boxed sections labeled 'I' and 'II'. Chord symbols 'Dm' and 'A' are placed above the notes. The lyrics are: 'Come, O Be - lov - ed, make your home in my heart. Come, Be - lov - ed, make my heart your home.'

# We Are All One

*Psalm 14*

CANON

Musical score for 'We Are All One' (Psalm 14). It features two staves of music in a canon format. The first staff begins with a treble clef, a key signature of one sharp (F#), and a common time signature (C). It includes two boxed sections labeled 'I' and 'II'. Chord symbols 'Bm' and 'Em' are placed above the notes. The lyrics are: 'We are all one. We are all one.. We are all one who seek Love's way.'

# Who Will Dwell with You

*Psalm 15*

CANON

Musical score for 'Who Will Dwell with You' (Psalm 15). It features two staves of music in a canon format. The first staff begins with a treble clef, a key signature of one sharp (F#), and a common time signature (C). It includes two boxed sections labeled 'I' and 'II'. Chord symbols 'G' and 'C' are placed above the notes. The lyrics are: 'Who will dwell with you in love, will live with - in your heart? Who will dance the dance of life, will sing the song of joy.'

# You Are My Beloved

*Psalm 16*

CANON

Musical score for 'You Are My Beloved' (Psalm 16). It features two staves of music in G major (one sharp) and common time. The first staff includes a repeat sign with first and second endings. Chords are indicated as Bm, Em, and Bm. The lyrics are: 'You are my Be - lov - ed: in You I can see all things.' The second staff continues with the lyrics: 'You are my Be - lov - ed: in will I live.' Chords are Bm and A.

# Be Thou My Feet

*Psalm 17*

Musical score for 'Be Thou My Feet' (Psalm 17). It features two staves of music in G major (one sharp) and 6/8 time. The first staff includes a repeat sign. Chords are Em, G, Em, and (C) Em. The lyrics are: 'Be thou my feet and my walk - ing. Be thou my eyes that I can see, O - pen my heart, com - pas - sion. Hear my cry and an - swer me.' The second staff continues with the lyrics: 'O - pen my heart, com - pas - sion. Hear my cry and an - swer me.' Chords are Em, G, Em, C, and Em.

# May We Walk with You

*Psalm 18*

CANON

Musical score for 'May We Walk with You' (Psalm 18). It features three staves of music in F major (two flats) and 2/4 time. The first staff includes a repeat sign with first and second endings. Chords are C7 and F. The lyrics are: 'May we walk with you just - ly, in mer - cy and in peace. May we be the mir - ror of your love in the world. May we love in the world.' The second staff continues with the lyrics: 'be the mir - ror of your love in the world. May we love in the world.' Chords are C7 and F.

# Cleanse Me

*Psalm 19*

Musical notation for the first two lines of 'Cleanse Me'. The first line has a treble clef, a key signature of one sharp (F#), and a common time signature (C). The melody consists of quarter notes. The lyrics are: 'Cleanse me from all my hid - den faults. Help me sur - render your love. Free me from all my hid - den fears. Help me - ren - der your love.' Chords are indicated above the staff: Bm, Em, A, Em, Bm, Em, A, Em, Bm.

# May the Name of Love

*Psalm 20*

Musical notation for the first two lines of 'May the Name of Love'. The first line has a treble clef, a key signature of one flat (Bb), and a common time signature (C). The melody consists of quarter notes. The lyrics are: 'May the name of the Lord be your pro - tec - tion; rise up in your might like a tow - er of strength.' Chords are indicated above the staff: Dm, Gm, Dm, A, Dm.

# You Root Out My Fears

*Psalm 21*

Musical notation for the first two lines of 'You Root Out My Fears'. The first line has a treble clef, a key signature of one sharp (F#), and a common time signature (C). The melody consists of quarter notes. The lyrics are: 'You root out my fears as I face my sha - dows. a blaz - ing sun, your light shines.' Chords are indicated above the staff: Em, Am, Em, Em, Bm, Am, B.

# Come Close to Me

*Psalm 22*

Musical notation for 'Come Close to Me' in 3/4 time, key of F major. The first line of music has chords F and C. The second line has chords Dm, Gm, and Bb. The lyrics are: 'Come close to me. Come close to me. Come close to me for trou - ble is near.'

# You Are My Shepherd

*Psalm 23*

Musical notation for 'You Are My Shepherd' in 3/4 time, key of G major. The first line of music has chords G, Em, and D7. The second line has chords G, Em, and G. The lyrics are: 'You are my shep - herd; you re - store my soul. You are my shep - herd; cup, it ov - er - flows.'

# Let the Holy One Come In

*Psalm 24*

Musical notation for 'Let the Holy One Come In' in 3/4 time, key of F major. It is marked 'CANON'. The first line of music has a repeat sign and a first ending bracket with a fermata over the first measure, followed by a fermata over the second measure. The second line of music has a fermata over the first measure. The lyrics are: 'your gates! O - pen your doors!! Let the Holy One come in!'

# Lead Me in Your Truth

*Psalm 25*

CANON

Musical score for 'Lead Me in Your Truth' (Psalm 25). It consists of three staves of music in G major (one sharp) and common time. The first staff begins with a box labeled 'I' and the chord Em. The lyrics are: 'Lead me in your truth and teach'. The second staff begins with a box labeled 'II' and continues the lyrics: 'pan - ion me a - long your way. For through I will know my'. The third staff continues the lyrics: 'whole - ness, re - flec - ting both ni and day.' Chords C and Em are indicated above the notes.

# May My Heart

*Psalm 26*

Musical score for 'May My Heart' (Psalm 26). It consists of one staff of music in G major (one sharp) and common time. The lyrics are: 'May my heart as your heart May my mind be as your mind.' Chords Em, D, and Em are indicated above the notes.

# Teach Me to Be Love

*Psalm 27*

Musical score for 'Teach Me to Be Love' (Psalm 27). It consists of three staves of music in G major (one sharp) and 3/4 time. The lyrics are: 'Teach me to be love as you are Love. Lead me through each fear Hold my hand as I walk through my doubts each day, that I may know your peace.' Chords G, Bm/F#, C/G, D7, G, C/G, D7, and G are indicated above the notes.

# Heart of My Heart

*Psalm 28*

Bm Em

Heart of my heart, I call to you.

A Em Bm

Blessed are you, Heart of my heart.

Detailed description: This block contains the musical notation for the first two lines of the song 'Heart of My Heart'. The first line is in G major, 3/4 time, with a treble clef. The notes are G4, A4, B4, C5, B4, A4, G4. Chords Bm and Em are indicated above the notes. The second line is also in G major, 3/4 time, with a treble clef. The notes are G4, A4, B4, C5, B4, A4, G4. Chords A, Em, and Bm are indicated above the notes.

# The Voice of Love

*Psalm 29*

CANON

I Em Am Em

The voice of Love is powerful - majestic is the Heart of love.

Detailed description: This block contains the musical notation for the song 'The Voice of Love'. It is marked as a canon and is in G major, 3/4 time, with a treble clef. The notes are G4, A4, B4, C5, B4, A4, G4. Chords I, Em, Am, and Em are indicated above the notes.

# Now We Are Dancing

*Psalm 30*

Dm C Dm

You are free. Now we are dancing.

C Dm

Turn - the darkness in - to light. You set us free.

C Dm

Now we are dancing. You are with us in the night.

Detailed description: This block contains the musical notation for the song 'Now We Are Dancing'. It is in D minor, 3/4 time, with a treble clef. The first line has notes D4, E4, F4, G4, F4, E4, D4 with chords Dm and C. The second line has notes D4, E4, F4, G4, F4, E4, D4 with chords C and Dm. The third line has notes D4, E4, F4, G4, F4, E4, D4 with chords C and Dm. The fourth line has notes D4, E4, F4, G4, F4, E4, D4 with chords C and Dm.

# You Are My Life

*Psalm 31*

Em

You are my light. My  
life is in your hands. You my light.  
— You are my li

Detailed description: This block contains the musical score for the song 'You Are My Life' (Psalm 31). It features three staves of music in a treble clef with a key signature of one sharp (F#) and a common time signature (C). The lyrics are written below the notes. A large, diagonal watermark reading 'SAMPLE' is overlaid across the entire page, including this section.

# I Surrender My Life

*Psalm 124*

CANON

I A Bm A Bm

I su - ren - der in - to your hands.

II A

Cre - ate in me a clean heart.

Detailed description: This block contains the musical score for 'I Surrender My Life' (Psalm 124). It is a canon piece in a treble clef with a key signature of one sharp (F#) and a 3/4 time signature. The score is divided into two parts, labeled 'I' and 'II'. The lyrics are written below the notes. A large, diagonal watermark reading 'SAMPLE' is overlaid across the entire page, including this section.

# All Is Held Together

*Psalm 33*

F Bb

From the distant stars to the depths of the sea,  
held to - geth - er by Love. Let us sing with joy - ful hearts that are  
o - pen and free. All is held to - geth - er by love.

Detailed description: This block contains the musical score for 'All Is Held Together' (Psalm 33). It features three staves of music in a treble clef with a key signature of two flats (Bb) and a common time signature (C). The lyrics are written below the notes. A large, diagonal watermark reading 'SAMPLE' is overlaid across the entire page, including this section.

# Come and Hear

*Psalm 34*

Em D Em D Em

Come and hear. Come and see. Come with hearts o and fr  
Come and see. Come and hear. Wel - come love. Fly a .

# Pour Forth Your Strength

*Psalm 35*

Em D

Pour forth your strength in - to my heart,  
that I may be strong.

# In You

*Psalm 36*

CANON

D I II Dm

In you the ver - y source of life. In your light do we see light.

# Live in Love

*Psalm 37*

C Dm

Give need to those who are greed - y. Live in love.



# For You Alone

*Psalm 38*

Em D Em

For you a-lone do I wait,. Be-lov-ed. Roll a-way the stone from my he-

# I Am Made New

*Psalm 39*

Dm Dm

I am made new, re- deemed by your love, re -  
deemed by your love, new.

# I Abandon Myself

*Psalm 40*

Em D Em

I a-ban- my - self in - to your hands, O Be - lov - ed. I a -  
ban - don - self in - to your hands. Yes! I come!

# Consider The Poor

*Psalm 41*

CANON

Musical notation for the first part of the song. It features a treble clef, a key signature of one flat (B-flat), and a 6/8 time signature. The melody is written on a single staff. Above the staff, there are two boxed sections labeled 'I' and 'II'. Chords are indicated above the notes: Dm, C, Dm, C, Dm. Below the staff, the lyrics are: "Bless-ed are you who con - si - der the poor. You are not be - se - sieged with fear."

# My Hope Is in You

*Psalm 42*

Musical notation for the first part of the song. It features a treble clef, a key signature of one sharp (F#), and a 3/4 time signature. The melody is written on a single staff. Above the staff, there are three chord markings: Em, C, Em. Below the staff, the lyrics are: "My hope is in you, strength and my joy."

Musical notation for the second part of the song. It features a treble clef, a key signature of one sharp (F#), and a 3/4 time signature. The melody is written on a single staff. Above the staff, there are two chord markings: Am, B7. Below the staff, the lyrics are: "O - pen the door to love."

# You Are My Strength

*Psalm 43*

Musical notation for the first part of the song. It features a treble clef, a key signature of one sharp (F#), and a 6/8 time signature. The melody is written on a single staff. Above the staff, there is one chord marking: Em. Below the staff, the lyrics are: "O send out your light and your truth; let them guide me."

Musical notation for the second part of the song. It features a treble clef, a key signature of one sharp (F#), and a 6/8 time signature. The melody is written on a single staff. Above the staff, there is one chord marking: Em. Below the staff, the lyrics are: "You are my strength and my joy."

# Rise Up!

*Psalm 44*

Em B Em

Rise up! Pray for a change of heart. Rise up! Why do you sleep?

Em Em

Rise up! Pray for a change of heart. Rise up! Why do you sleep?

The musical notation for 'Rise Up!' is written on two staves. The first staff begins with a treble clef, a key signature of one sharp (F#), and a 6/8 time signature. The melody consists of eighth and quarter notes. Chords are indicated above the staff: Em, B, and Em. The lyrics are 'Rise up! Pray for a change of heart. Rise up! Why do you sleep?'. The second staff continues the melody and lyrics, with chords Em and Em.

# Turn Your Feet

*Psalm 43*

Bm Em Bm A Bm

Turn your feet to the path of Love. A-wak-en to the Heart of your heart.

The musical notation for 'Turn Your Feet' is written on a single staff. It begins with a treble clef, a key signature of one sharp (F#), and a common time signature (C). The melody is composed of quarter and eighth notes. Chords are indicated above the staff: Bm, Em, Bm, A, and Bm. The lyrics are 'Turn your feet to the path of Love. A-wak-en to the Heart of your heart.'.

# Be Still

*Psalm 46*

Em C Em

Be still and know that I am Love. Be still and know.

Em C Em

Be still and know that I am Love. Be still.

The musical notation for 'Be Still' is written on two staves. The first staff begins with a treble clef, a key signature of one sharp (F#), and a common time signature (C). The melody is composed of quarter and eighth notes. Chords are indicated above the staff: Em, C, and Em. The lyrics are 'Be still and know that I am Love. Be still and know.'. The second staff continues the melody and lyrics, with chords Em, C, and Em.

# Gather As One

*Psalm 47*

CANON

Musical notation for the first part of the canon. It features a treble clef, a key signature of one flat (Bb), and a common time signature (C). The melody is written on a single staff. Above the staff, there are two boxed 'I' and 'II' markers. Chords 'Dm' and 'II' are indicated above the staff. The lyrics are: 'May the lead - ers of all the na - tions gath - er as one, walk in peace.'

# We Call on Your Name

*Psalm 48*

CANON

Musical notation for the first part of the canon. It features a treble clef, a key signature of one sharp (F#), and a common time signature (C). The melody is written on a single staff. Above the staff, there are two boxed 'I' and 'II' markers. Chords 'Em' and 'D' are indicated above the staff. The lyrics are: 'We call on your name, Ho - ly One. Your Word is our strength - more of strength.'

# Spirit of Truth

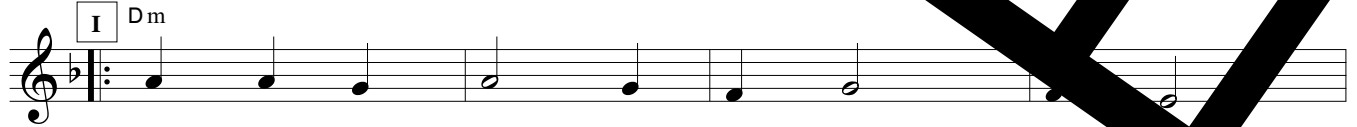
*Psalm 49*

Musical notation for the first part of the canon. It features a treble clef, a key signature of one flat (Bb), and a 3/4 time signature. The melody is written on a single staff. Above the staff, there are three boxed 'I' markers. Chords 'Dm', 'Gm/D', and 'Dm' are indicated above the staff. The lyrics are: 'Spirit of truth, you are my strength, you are my guiding light.'

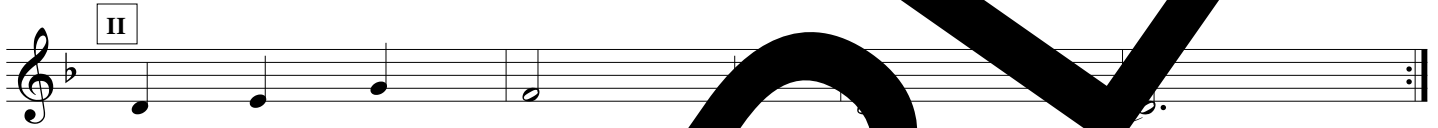
# Search for the Voice

*Psalm 50*

CANON Performance suggestion: Sing all 3 verses in unison, then return to the beginning for the canon



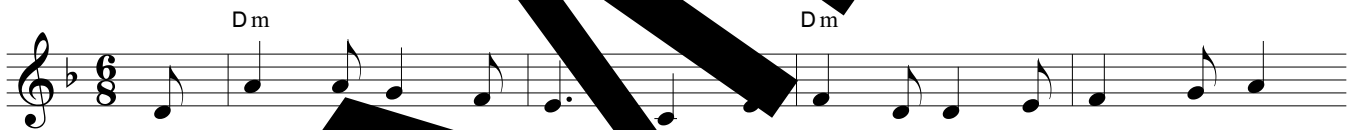
1. Search for the voice that dwells in si -  
2. Call up - on me in time of troub - le  
3. Hon - or my love and you will know me.



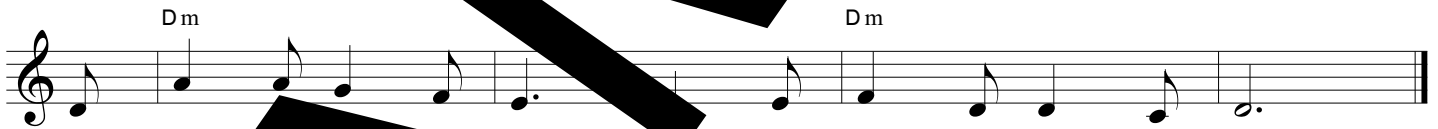
1-3. Fol - low the in -

# Create in Me a Clean Heart

*Psalm 51*



Cre - ate in me a clean heart. En - fold me in your arms of love.



Cre - ate in me a clean heart. En - fold me in your love.

# Blessed Are Those

*Psalm 52*



Blessed are those who trust in your love. They



walk in your truth; they live in your peace.

# My Courage Is in You

*Psalm 53*

Em G D Em

My cour - age is in you, O Love. Rise up and me free

# In Your Holy Mercy

*Psalm 54*

CANON

I Em

A - wake - en me, O Might - y One, in your ho - ly mer - cy. A -

Am Em (C) D Em

wak - en me, O Might - y One that I be free of fear.

# Listen to Me

*Psalm 55*

CANON

I Dm

Listen An - swer me. I cry out to you in the midst of my pain.

# Put My Trust in You

*Psalm 56*

Em D Em D Em

I put my trust in you. I put my trust in you. In

Em D Em D Em (C) Em

you, my guide and com - for - ter, I put my trust in you.

# In The Shadow of Your Wings

*Psalm 57*

Em A F# Bm

In the shad - ow of your wings, in the shad - ow of your wings

Em A Bm F# Bm

in the shad - ow of your wings, will find peace.

# Open Our Eyes

*Psalm 18*

Bm A m A Bm

O - pen our eyes. Break through the darkness. Tear down the walls of our fears.

# O Blessed Heart

*Psalm 135*

F C F

O Bless - ed Heart, sing our songs, we sing our songs of love for you.

C F

We sing as loud as you desire for all, for you have set us free.

# Walk with Me

*Psalm 60*

I D

Walk with me as love. Walk with me know - ing love.

II Em D Em

Walk with me as love. Come walk with love.

# You Fill Me with Abiding Love

*Psalm 61*

Em D F

You fill me with a - bid - ing love, deep peace and wis - dom.

# For You Alone

*Psalm 62*

Dm Dm

For you a - lone, my soul waits in si - lence. For you a - lone; for you a - lone.

# Open Your Hearts to Love

*Psalm 64*

CANON

I Em D Em II D Em

O - pen your hearts to love. Live in peace.

Em D Em D Em

O - pen your heart to love. Live in joy!

# Ponder the Power of Love

*Psalm 64*

A Bm A Bm

Pon - der the pow - er, pon - der the pow - er, pon - der the pow - er of love.



# You Are the Hope

*Psalm 65*

Dm C Dm Gm A Dm

You are the hope of all the earth. To you we com - mend our lives

# I Enter Your Heart

*Psalm 66*

Dm C Dm

I en - ter your heart, I sur - ren - dered to love.

C Dm A

I com - mend my soul in - to your hands, keep - ing.

# Love's Grace

*Psalm 67*

Em Em D Em

Love's grace a - bides where we are. In love let us make our home.

# I Will Shatter the Fears that Bind

*Psalm 68i*

Am G Dm Am

I will shat - ter the fears that bind, that you may walk in a new dawn.

G Dm E

I will shat - ter the fears that bind, that you may dance with light hearts,

# Reach into Our Hearts

*Psalm 68ii*

Musical score for "Reach into Our Hearts" in 3/4 time, key of B-flat major. The score consists of four staves of music with lyrics underneath. Chords are indicated above the notes: F, Gm7, C7, and F. The lyrics are: "Reach in - to our hearts. Root out fears. Fill us with love. Call your peo - ple home. Reach in - to our hearts. Root out fears. Fill us with light. Call peo - ple home."

# Let Me See with the Heart's Eye

*Psalm 68*

Musical score for "Let Me See with the Heart's Eye" in common time, key of D major. The score consists of two staves of music with lyrics underneath. Chords are indicated above the notes: Bm, Em, F#, and Bm. The lyrics are: "Let me see with the heart's eye. Let me hear through the heart's ear, and I will praise your name in song."

# Let Me Begin Anew

*Psalm 70*

Musical score for "Let Me Begin Anew" in 3/4 time, key of B-flat major. The score consists of two staves of music with lyrics underneath. Chords are indicated above the notes: F, Bb/F, F, Bb/F, C7, F, Dm, F, C7/E, and F. The lyrics are: "Let me begin a - new, as a child at its moth - er's breast. Let me be - gin a - new, as a child who basks in love."

# In Your Compassion

*Psalm 71*

CANON

**I** Dm  
 In your com-pas-sion come and re-fresh me. Lis-ten to my cry, an-swer my  
**II**  
 In your com-pas-sion come and re-fresh me. Strength-en again, my friend, be not far from me.

# May Your Glory Fill the Earth

*Psalm 72*

CANON

**I** Dm Gm C Dm  
 Blest be you who comes in the name of the Lord. May your glo-ry fill the earth.

# I Was Blind

*Psalm 73*

Dm Dm C  
 I was blind, but now I see. You wait-ed for me to see,  
 Dm Gm C Dm  
 I was proud, but now I am silent. You were ev-er near to me.

# Yours Is the Day

*Psalm 74*

Bm  
 Yours is the day. Yours is the night.  
 A Bm  
 Yours is the tem-ple with-in my heart.

# Our One Desire

*Psalm 75*

CANON

Musical notation for 'Our One Desire' in G minor, 3/4 time. It features a canon with three parts. Part I starts with a Dm chord and the lyrics 'Sift us as a thresh - er. Burn us as fire.' Part II continues with 'Weigh us in the bal - ance is our one de - sire.' Part III continues the melody. A large black watermark 'SAMPLE' is overlaid on the right side of the page.

# You Break down Our Walls

*Psalm 124*

Musical notation for 'You Break down Our Walls' in D major, 3/4 time. The lyrics are: 'You break down our walls. You raise us up with love. You call us to a - wak - en. How glo - ri - ous your name.' The music includes chords Bm, Em, and Bm. A large black watermark 'SAMPLE' is overlaid on the page.

# Can You Wonder

*Psalm 7*

Musical notation for 'Can You Wonder' in G minor, 3/4 time. The lyrics are: 'Can you wonder that we trem - ble in the pow - er of your love.' The music includes chords Dm, Bb, C, and Dm. A large black watermark 'SAMPLE' is overlaid on the page.

# Listen Long

*Psalm 78*

Musical notation for 'Listen Long' in G major, 3/4 time. The lyrics are: 'Listen long in the si - lence, that the Word may be heard.' The music includes chords A and Bm. A large black watermark 'SAMPLE' is overlaid on the page.

# Pour Out Your Love

*Psalm 79*

Musical score for 'Pour Out Your Love' (Psalm 79) in G major, 3/4 time. The score consists of three staves of music with lyrics underneath. The lyrics are: 'Pour out your love. Pour out your love. Pour out your love on your people. O - pen our hearts. O - pen our hearts. O - pen the your people.' Chords are indicated above the notes: D, G, D, G, A, D, G, D.

# Teach Us to Love

*Psalm 80*

Musical score for 'Teach Us to Love' (Psalm 80) in F# major, 6/8 time. The score consists of one staff of music with lyrics underneath. The lyrics are: 'Re - store us, O Ho - ly one. your face shine on us. Teach us, teach us to love.' Chords are indicated above the notes: Bm, F#m, Bm, F#m, Em, F#, Bm.

# I Am Your Very Breath

*Psalm 81*

Musical score for 'I Am Your Very Breath' (Psalm 81) in D minor, common time. The score consists of two staves of music with lyrics underneath. The lyrics are: 'I am your ver - y breath from the be - gin - ning. My voice you've come to know. O - pen up your heart I will fill it. Your heart will o - ver - flow.' Chords are indicated above the notes: Dm, Gm, Dm, C, Dm, Dm, C, Dm.

# Arise! Awaken!

*Psalm 82*

Musical score for 'Arise! Awaken!' (Psalm 82) in D minor, common time. The score consists of two staves of music with lyrics underneath. The lyrics are: 'A - rise! A - wak - en! Come in - to the light. Shed dark - ness like a skin. A - rise! A - wak - en! Come in - to the light. A new dawn dwells with - in.' Chords are indicated above the notes: Dm, C, Dm, C, Dm, C, Dm.

# Fear Is Rampant

*Psalm 83*

Bm A Bm

Fear is ram - pant in the world. Let all peo - ple your love.

# All that Is within Me

*Psalm 84*

Dm Gm Dm Gm Dm

All that is with - in me sings for the Liv - ing of love.

Gm Dm A Dm

O E - ter - nal lov - er, may I dwell in your Liv - ing Heart of Love.

# Restore Us, Revive Us

*Psalm 85*

D D

Re - store us, O God, of truth. Re -

G A D G

vive us, O God, ly One. Re - fine us, O Fire of

D G D

love. - mind us, thy will be done.

# Teach Me Your Ways

*Psalm 86*

G D G D

Teach your ways; may I walk in your truth.

G D G D

Pour forth your light, for my trust is in you.

# City of Light

*Psalm 87*

E A

In the heav - en - ly realm stands the Ci - ty of Light

E A B7 E

those who live by the Spir - it of love. Glo - ries a - wait you in the

A B E

Ci - ty of Light, if you live by the Spi - rit of love.

# Merciful Redeemer

*Psalm 88*

C Cm C

Mer - ci - ful re - deem - er, hear my prayer. I am in a deep pit of de - spair,

C

I am in a pri - son, wear - of of lead. Reach in - to the dark - ness of my fears.

# Blessed Are Those

*Psalm 89*

CANON

Em II D Em

Bless - ed are those who know your love. Through you we are born a - new,

D Em

Bless - ed are those who call up - on your name. Through you we are born a - new.

# Awaken Us

*Psalm 90*

CANON

Musical score for 'Awaken Us' (Psalm 90) in D minor, 4/4 time. The score is a canon with two parts, I and II. Part I begins with a Dm chord and a repeat sign. Part II begins with a C chord. The lyrics are: 'A - wak - en us, O Ho - ly One; too long have we been sleep - ing. In - crease the light with - in us; O Be - lov - ed, hear our prayer. O Be - lov - ed, hear our prayer.' The score ends with a 'Final' section and a Dm chord.

# I Will Deliver You

*Psalm 91*

Musical score for 'I Will Deliver You' (Psalm 91) in E minor, 4/4 time. The score consists of two staves. The lyrics are: 'Be - cause you cleave to me in love, I will de - liv - er you. Be - cause you cleave to me, I will de - liv - er you.' The score includes chords Em, D, and Em.

# Glad - den My Soul

*Psalm 92*

CANON

Musical score for 'Glad - den My Soul' (Psalm 92) in D minor, 3/4 time. The score is a canon with two parts, I and II. Part I begins with an Am chord and a repeat sign. Part II begins with a Dm chord. The lyrics are: 'Heart of my heart, glad - den my soul. The me in the oil of kind - ness.' The score includes chords Am, Dm, and Am.

# You Reign

*Psalm 93*

CANON

Musical score for 'You Reign' (Psalm 93) in D minor, 4/4 time. The score is a canon with two parts, I and II. Part I begins with a Dm chord. Part II begins with a C chord. The lyrics are: 'You who are and ev - er shall be, you reign a - dorned in ma - jes - ty.' The score includes chords Dm, C, and Dm.



# Heart of Pure Fire

*Psalm 94*

Em Am Em G

Heart of pure fire, cleanse and re - fine us, that we may hear your  
 Em D  
 voice, that we may hear your Word

# You Are the Breathing Life of All

*Psalm 95*

Bm Em Bm A Bm

You are the breathing life of all. The depths of earth be - long to love. You  
 Em Bm A Bm  
 are the breath - ing life of all. The sky a - bove be - longs to love.

# Be Guided by Love

*Psalm 96*

C G C F G C

Yield to love, be guid-ed by love. Yield and be guid-ed by love.

# You Are the Heart

*Psalm 97*

Em D Em

You are the heart of ev - 'ry-thing. Your light en-light-ens the world.



# Let the Voices of All People

*Psalm 98*

CANON

Musical score for 'Let the Voices of All People' (Psalm 98). It is a canon in C major, 4/4 time. The score consists of four staves of music. The first staff has a repeat sign and is divided into two parts, I and II. The lyrics are: 'Let the voices of the people make a joyful noise! Let them blend in harmony. Let the sea and all that fills it laugh and clap their hands, for your love, O Lord, has set your people free.'

# Out of the Silence

*Psalm 100*

Musical score for 'Out of the Silence' (Psalm 100). It is in D minor, 6/8 time. The score consists of one staff of music. The lyrics are: 'Out of the silence your word can be heard in the land.'

# Open the Gates

*Psalm 100*

CANON

Musical score for 'Open the Gates' (Psalm 100). It is a canon in C major, 6/8 time. The score consists of four staves of music. The first staff has a repeat sign and is divided into two parts, I and II. The lyrics are: 'Open the gates of your heart and let us enter your court with praise. Open the gates of your heart and let us enter Love's court with praise.'

# May I Be a Mirror

*Psalm 101*

Bm

May I be a mir - ror of your love to all I set. I lay

Em F# Bm

I re - flect the free - dom of your truth.

# Your Love Never Fails

*Psalm 102*

CANON

I Bm II

Our lives are like the seasons and they pass a - way, but

A Bm

your years nev - er fail. Our lives are like the sea - sons and they

A Bm

pass a - way, but your love will en - dure.

# Bless the Beloved

*Psalm 103*

Bm Gm Dm C Dm

Bless the Belov - ed, O my soul. I will bless your ho - ly name.

Bm Gm Dm C Dm

Praise the Belov - ed, O my soul. I will praise your name.

# O You Who Know All Hearts

*Psalm 104*

Em D Em Am

O You who know all hearts, how man - i - fold your wis - dom In

Em D Em D Am B7

wis - dom you cre - a - ted all. We sing a song to you.

# All That We Have

*Psalm 105*

Em Am Am B7 Em

All that we have is from you. All that we have is yours.

# We Listen

*Psalm 136*

Em

We lis - ten for your voice, O giv - er of the jour - ney. —

Am Em

to live mys - ter - ry. We lis - ten for your voice, O

Am Em

of the jour - ney. — Help us ful - fill our des - ti - ny.

# Let Your Heart Be Pure

*Psalm 107*

D G Em G D

Let your heart be pure and sim - ple. Let your soul be filled with li

# I Am in You

*Psalm 108*

C F G7

For as I am in you, so do you live in me. We are  
one in the Spir of love.

# Love Me to Life

*Psalm 109*

Bm Em F# Bm Em F#

Wash a - way my hid - den faults. Love me in - to new life.  
Wash a - way my hid - den faults. Love me in - to life.

# Come Walk with Me

*Psalm 110*

I II

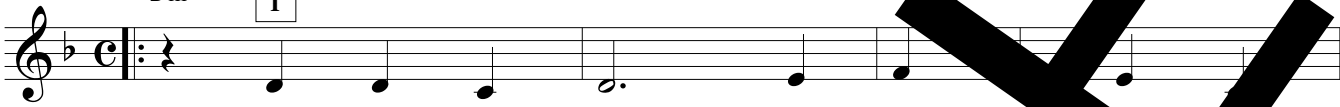
Come walk with me giv - ing birth to a new earth.  
Come claim your home in the Un - i - ver - sal Heart.

# Your Word Is Truth

*Psalm 111*


CANON

Dm I



Your word is truth for those with

Dm II C Dm



hear. Your word is truth, your word is truth.

# Blessed Are They


*Psalm 112*

Em Em



1. Bless - ed are those who light in the Word,
2. Bless - ed are those who are fac - ing their fears,
3. Bless - ed are those who are v - ing and kind,
4. Bless - ed are those who have f - s that are firm,
5. Bless - ed are those who free - ly to all,

Am B7 Em




for they shall dwell in love.

# Sing Praises

*Psalm 113*

CANON

Em Em D II Em D Em




Sing praises to the Heart of all hearts. O - pen your heart to Love.

# Befriend All That Is

*Psalm 114*

Bm Em F# Bm



Be - lieve all that is with - in you, for then you will find your way home.

# May You Be Guided

*Psalm 115*

Bm A Bm A Bm

May you be guid-ed by the Spir-it of Truth who dwells with - in your heart.

A Bm A

May you be guid-ed by the Spir-it of Truth who dwells with - in your heart.

# I Will Drink

*Psalm 116*

Dm C C Bb A

I will drink of the Cup of Life and of the Bread of Life.

# Praises Be

*Psalm 117*

CANON

I Em D II D Em

Praises be to the Heart of our Lord, for great is the Bless-ed One's love for us!

# Your Steadfast Love

*Psalm 118*

F Bb

Your steady - fast love en - dures for ev - er. I will not give

67 Bb F

in - to my trust. Your steady - fast love en - dures for ev - er. I will nev - er fear.

# I Offer Myself

*Psalm 119*

Musical notation for 'I Offer Myself' in G major, 3/4 time. The melody is on a treble clef. Chords are indicated above the staff: D, G, A, G, Em, A. The lyrics are: I of - fer my - self in - to your hands, that I may live ful - ly in your love.

# Be Strong in Me

*Psalm 120*

Musical notation for 'Be Strong in Me' in G major, 6/8 time. The melody is on a treble clef. Chords are indicated above the staff: Bm, A, Bm. The lyrics are: Be strong in me; I face the dark - ness. Be strong in me; be strong in me.

# Psalm 121

*Psalm 121*

Musical notation for 'Psalm 121' in G major, 6/8 time. The melody is on a treble clef. Chords are indicated above the staff: Em, B, B7, Em. The lyrics are: In you I will not be a - fraid of the dark-ness. You are the light of my life. —

# Come to the Heart

*Psalm 122*

Musical notation for 'Come to the Heart' in G major, 4/4 time. The melody is on a treble clef. Chords are indicated above the staff: A/E, E, Bm/D, E. The lyrics are: 1. Come, come to the Heart of Love, — en - ter the gates — fac - ing fears. 2. Come, come to the Heart of Love, — en - ter the gates — in deep peace. 3. Come, come to the Heart of Love, — en - ter the gates — with great joy. 4. Come, come to the Heart of Love, — en - ter the gates — seek - ing love.

1. Come, come to the Heart of Love, — en - ter the gates — fac - ing fears.
2. Come, come to the Heart of Love, — en - ter the gates — in deep peace.
3. Come, come to the Heart of Love, — en - ter the gates — with great joy.
4. Come, come to the Heart of Love, — en - ter the gates — seek - ing love.



# Have Mercy

*Psalm 123*

CANON

I Bm A Bm I A Bm

Have mer - cy on us, have mer-cy, as we seek the Heart of Love. Have  
A Bm A

mer - cy on us, have mer - cy, as we seek the Heart of ve.

# Grant Us the Strength

*Psalm 124*

F Bm C7

Grant us the strength of a eagle's wing Give us the cour-age to fly.  
F Bb F Bb F

Break with - in us the bonds of fear, we may live in love.

# Enter the Garden

*Psalm 125*

Dm C Dm C Dm

Come! En - ter the gar - den; en - ter the gar - den of love.

# Restore Us. O Healer

*Psalm 126*

C Dm

Re - store us O Heal - er, like new born babes who have  
Dm

nev - er strayed from you.

# Unless You Make Your Home

*Psalm 127*

Em

Un - less you make your home with - in us, we will wan - der through - out vain.

# Peace Be within You

*Psalm 128*

Dm G Dm

Blest are you who walk in Love's path. (Peace be with - in you.)

Dm G Dm

Blest are you who com - fort the oppressed. (Peace be with - in you.)

Dm G Dm

Blest are you who build your home on rock. (Peace be with - in you.)

# Where Is Beauty

*Psalm 129*

CANON

Wher - er you dwell, there is beau - ty. Be

glad, peo - ple of the Light.

# I Wait for You

*Psalm 130*

CANON

I Wait for you, my soul waits; for in your love I will live.

# Like a Child

*Psalm 131*

Am G Dm7

Like a child that is qui - et - ed at its moth - er's breast, my soul.

# Enter into the Silence

*Psalm 132*

Dm G A

En - ter in - to si - lence  
Lis - ten for the mus - ic the Heart of Love. —

# How Good It Is

*Psalm 133*

CANON I F II

When the saints dwell in u - ni - ty,  
how good it is! How pleas - ant it is!

# Come Bask in the Light

*Psalm 134*

Dm C Bb A Dm C Bb A

Come bask in the Light of Love, all you who would serve.  
Life up - on your lips to the Ho - ly One, — sing - ing song of praise!

# To You

*Psalm 135*

Musical notation for the first two lines of 'To You'. The first line starts with a treble clef, a key signature of one flat (B-flat), and a 6/8 time signature. The melody consists of eighth and quarter notes. Chords F and C are indicated above the staff. The lyrics are: 'To you, who en - ter all o - pen hearts, we raise our voice in praise to you, O you, who en - ter all o - pen hearts, we sing our praise to you.' The second line continues the melody and lyrics.

# Your Love Sustains Us

*Psalm 136*

Musical notation for the first line of 'Your Love Sustains Us'. The first line starts with a treble clef, a key signature of one flat (B-flat), and a 3/4 time signature. The melody consists of quarter and eighth notes. Chords Dm and C are indicated above the staff. The lyrics are: 'Your love sus - tains us. Your love sus - tains us.' The second line continues the melody and lyrics.

# Too Long

*Psalm 137*

Musical notation for the first two lines of 'Too Long'. The first line starts with a treble clef, a key signature of one sharp (F-sharp), and a common time signature. The melody consists of quarter and eighth notes. Chords Em and D are indicated above the staff. The lyrics are: 'Too long have I mourned where ere the winds have blown. Guide me to the promised shore.' The second line continues the melody and lyrics.

# You Dwell in Me

*Psalm 138*

Musical notation for the first two lines of 'You Dwell in Me'. The first line starts with a treble clef, a key signature of one flat (B-flat), and a common time signature. The melody consists of quarter and eighth notes. Chords Dm and C are indicated above the staff. The lyrics are: 'You dwell in me, you dwell in me. I was hum - bled when I came to see.' The second line continues the melody and lyrics.

# Search Me

*Psalm 139*

Dm C

You know my strengths; you know my fears. Search me and know my heart.

C Dm

You formed me in my moth - er's womb. Search me and know my heart.

# Guide Me

*Psalm 140*

Dm C A Dm

Guide me, O my Be - lov - ed. Lead me in - to new life.

# May Your Light Shine

*Psalm 141*

CANON

I Em II

May your light shine on me; may your light so shine,

bring - ing peace and joy. May your light so shine.

# I Call to You

*Psalm 142*

F Bb

I call to you; I cry out to you. I

Gm F

pour forth my fears be - fore you.

# O Bringer of Joy

*Psalm 143*

Am G Am

O bring - er of joy, a - wak - en my heart. Pour  
 Am E  
 bless - ings through all my be - ing.

# Awaken

*Psalm 144*

Em

A - wak - en us, o - pen in - flame us, em - pow -  
 Em  
 - er us! E - voke the in our souls.

# Shine Out to the World

*Psalm 145*

D G Em A7

1. Let your y - dom } with - in me shine out to the world!  
 2. Let your light }  
 3. Let your glo - ry }  
 D G A7 D  
 Let your wis - dom } with - in me shine out to the world!  
 Let your ar - vine }  
 3. Let your glo - ry }

# Loose the Fetters of Fear

*Psalm 146*

Dm

Loose the fet - ters of fear that bind us, loose fet - ters of  
 A Dm  
 fear, that we will praise you al - ways free and joy - ful song!

# Know We Are One

*Psalm 147 i*

CANON

I Bm III

A - wak - en! A - wak - en! Know we are one! A -  
 wak - en! A en! Know that we are one!

# Life of All Life

*Psalm 147 ii*

F Bb F

Praise the Be - lov - ed, Life of all life.  
 F Bb F  
 Praise - lov - ed, Heart of all hearts.

# Praises Be

*Psalm 148*

Prais - es be to the Bles - sed One, the ver - y Breath of our breath

Prais - es be to the Bles - sed One, the ver Heart of our part.

# We Are in Harmony

*Psalm 149*

CANON

With truth on our tongues, and grat - i - tude our friend,

we are in har-mon-y with the u - ni - verse. With truth on our tongues, and

grat - i - tude our friend, we are in har-mon-y with the u - ni - verse.

# Praise the Beloved

*Psalm 150*

CANON

Let ev - 'ry - thing that breathes praise the Be - lov - ed,

praise Be - lov - ed with their lives.



## Index

All That Is Within Me <i>Psalm 84</i>	29	I Put My Trust in You <i>Psalm 56</i>	21
All Is Held Together <i>Psalm 33</i>	14	I Surrender My Life <i>Psalm 32</i>	14
All That We Have <i>Psalm 105</i>	35	I Wait for You <i>Psalm 130</i>	41
Arise, O Beloved <i>Psalm 7</i>	6	I Was Blind <i>Psalm 73</i>	26
Arise, Awaken <i>Psalm 82</i>	28	I Will Deliver You <i>Psalm 91</i>	31
Awaken Us <i>Psalm 90</i>	31	I Will Drink <i>Psalm 116</i>	38
Awaken All <i>Psalm 2</i>	4	I Will Shatter the Fears that Bind <i>Psalm 68</i>	24
Awaken Us <i>Psalm 144</i>	45	In My Beloved <i>Psalm 11</i>	7
Awaken, O Love <i>Psalm 10</i>	7	In the Shadow of Your Wings <i>Psalm 57</i>	22
Be Still <i>Psalm 46</i>	18	In You <i>Psalm 36</i>	15
Be Guided By Love <i>Psalm 96</i>	32	In You <i>Psalm 121</i>	39
Be Thou My Feet <i>Psalm 17</i>	9	In Your Holy Mercy <i>Psalm 54</i>	21
Be Like a Tree <i>Psalm 1</i>	4	In Your Compassion <i>Psalm 71</i>	25
Be Strong in Me <i>Psalm 120</i>	39	Know We Are One <i>Psalm 146</i>	46
Befriend All That Is <i>Psalm 114</i>	37	Lead Me in Your Truth <i>Psalm 25</i>	12
Bless the Beloved <i>Psalm 103</i>	34	Lead Me <i>Psalm 5</i>	5
Blessed Are Those <i>Psalm 112</i>	37	Let Me See with the Heart's Eye <i>Psalm 69</i>	25
Blessed are Those <i>Psalm 52</i>	20	Let Me Begin Anew <i>Psalm 70</i>	25
Blessed Are Those <i>Psalm 89</i>	30	Let the Holy One Come In <i>Psalm 24</i>	11
Can You Wonder <i>Psalm 77</i>	27	Let the Voices of All People <i>Psalm 98</i>	33
City of Light <i>Psalm 87</i>	30	Let Your Heart Be Pure <i>Psalm 107</i>	36
Cleanse Me <i>Psalm 19</i>	10	Life of All Life <i>Psalm 147</i>	46
Come, O Beloved <i>Psalm 13</i>	8	Like a Child <i>Psalm 131</i>	41
Come Walk with Me <i>Psalm 110</i>	36	Listen Long <i>Psalm 78</i>	27
Come to Our Aid <i>Psalm 12</i>	7	Listen to Me <i>Psalm 55</i>	21
Come Bask in the Light <i>Psalm 134</i>	42	Live in Love <i>Psalm 37</i>	15
Come Close to Me <i>Psalm 22</i>	11	Loose the Fetters of Fear <i>Psalm 146</i>	46
Come and Hear <i>Psalm 34</i>	15	Love Me into Life <i>Psalm 109</i>	36
Come to the Heart <i>Psalm 122</i>	39	Love's Grace <i>Psalm 67</i>	24
Create in Me a Clean Heart <i>Psalm 51</i>	20	Make Peace <i>Psalm 4</i>	5
Enter the Garden <i>Psalm 125</i>	40	May Your Light Shine <i>Psalm 141</i>	44
Enter Into the Silence <i>Psalm 132</i>	41	May You Be Guided <i>Psalm 115</i>	38
Fear Is Rampant <i>Psalm 83</i>	28	May We Walk with You <i>Psalm 18</i>	9
For You Alone <i>Psalm 38</i>	16	May My Heart <i>Psalm 26</i>	12
For You Alone <i>Psalm 62</i>	23	May Your Glory Fill the Earth <i>Psalm 72</i>	26
Gather As One <i>Psalm 47</i>	19	May I Be a Mirror <i>Psalm 101</i>	34
Gladden My Soul <i>Psalm 92</i>	31	May the Name of Love <i>Psalm 20</i>	10
Grant Us the Strength <i>Psalm 124</i>	40	Merciful Redeemer <i>Psalm 88</i>	30
Guide Me <i>Psalm 140</i>	44	My Courage Is in You <i>Psalm 53</i>	21
Have Mercy <i>Psalm 123</i>	40	My Hope Is in You <i>Psalm 42</i>	17
Heart of My Heart <i>Psalm 28</i>	13	Now We Are Dancing <i>Psalm 30</i>	13
Heart of Pure Fire <i>Psalm 94</i>	32	O You Who Know All Hearts <i>Psalm 104</i>	35
How Good It Is <i>Psalm 133</i>	42	O Bringer of Joy <i>Psalm 143</i>	45
How Powerful Is Your Name <i>Psalm 8</i>	6	O Blessed Heart <i>Psalm 59</i>	22
I Abandon Myself <i>Psalm 40</i>	16	Open Our Eyes <i>Psalm 58</i>	22
I Am Made New <i>Psalm 39</i>	16	Open the Gates <i>Psalm 100</i>	33
I Am Your Very Breath <i>Psalm 81</i>	28	Open Your Hearts to Love <i>Psalm 63</i>	23
I Am In You <i>Psalm 108</i>	36	Our One Desire <i>Psalm 75</i>	26
I Call To You <i>Psalm 142</i>	44	Out of the Silence <i>Psalm 99</i>	33
I Enter Your Heart <i>Psalm 66</i>	24	Peace Be Within You <i>Psalm 128</i>	41
I Offer Myself <i>Psalm 119</i>	39	Ponder the Power <i>Psalm 64</i>	23

Pour Forth your Strength <i>Psalm 35</i>	15	Unless You Make Your Home <i>Psalm 127</i>	41
Pour Out Your Love <i>Psalm 79</i>	27	Walk With Me <i>Psalm 60</i>	22
Praises Be <i>Psalm 117</i>	38	We Listen <i>Psalm 106</i>	35
Praises Be <i>Psalm 148</i>	47	We Are All One <i>Psalm 14</i>	8
Praise the Beloved <i>Psalm 150</i>	47	We Are In Harmony <i>Psalm 149</i>	47
Reach Into Our Hearts <i>Psalm 68</i>	25	We Call on Your Name <i>Psalm 48</i>	19
Restore Us, Revive Us <i>Psalm 85</i>	29	Who Will Dwell With You <i>Psalm 15</i>	8
Restore Us, O Healer <i>Psalm 126</i>	40	You Are My Life <i>Psalm 31</i>	14
Rise Up in Me <i>Psalm 3</i>	4	You Are Not Beset <i>Psalm 41</i>	17
Rise Up <i>Psalm 44</i>	18	You Are My Strength <i>Psalm 43</i>	17
Search Me <i>Psalm 139</i>	44	You Break down Our Walls <i>Psalm 76</i>	27
Search for the Voice <i>Psalm 50</i>	20	You Are the Hope <i>Psalm 65</i>	24
Shine Out to the World <i>Psalm 145</i>	45	You Fill Me with Abiding Love <i>Psalm 61</i>	23
Sing Praises <i>Psalm 113</i>	37	You Dwell In Me <i>Psalm 138</i>	43
Spirit of Truth <i>Psalm 49</i>	19	You Reign <i>Psalm 93</i>	31
Surround Me <i>Psalm 6</i>	5	You Are My Shepherd <i>Psalm 23</i>	11
Teach Me to Be Love <i>Psalm 27</i>	12	You Root Out My Fears <i>Psalm 21</i>	10
Teach Me Your Ways <i>Psalm 86</i>	29	You Are My Beloved <i>Psalm 16</i>	9
Teach Us to Love <i>Psalm 80</i>	28	You Are the Breathing Life of All <i>Psalm 95</i>	32
Tell the Story <i>Psalm 9</i>	6	You Are the Heart <i>Psalm 972</i>	32
The Voice of Love <i>Psalm 29</i>	13	Your Word Is Truth <i>Psalm 111</i>	37
There Is Beauty <i>Psalm 129</i>	41	Your Love Sustains Us <i>Psalm 136</i>	43
To You <i>Psalm 135</i>	43	Your Love Never Fails <i>Psalm 102</i>	34
Too Long <i>Psalm 137</i>	43	Your Steadfast Love <i>Psalm 118</i>	38
Turn Your Feet <i>Psalm 45</i>	18	Yours Is the Day <i>Psalm 74</i>	26