

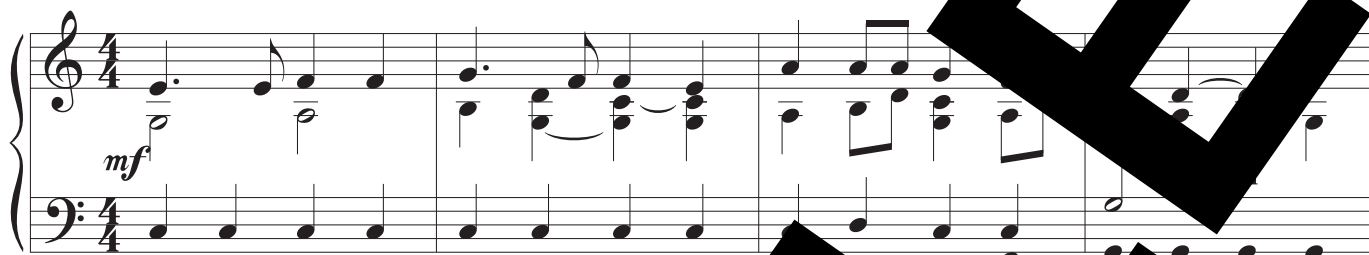
Christians to the Pascal Victim

Sequence for Easter Sunday

David A. Gatwood

$\text{♩} = 68$

Piano



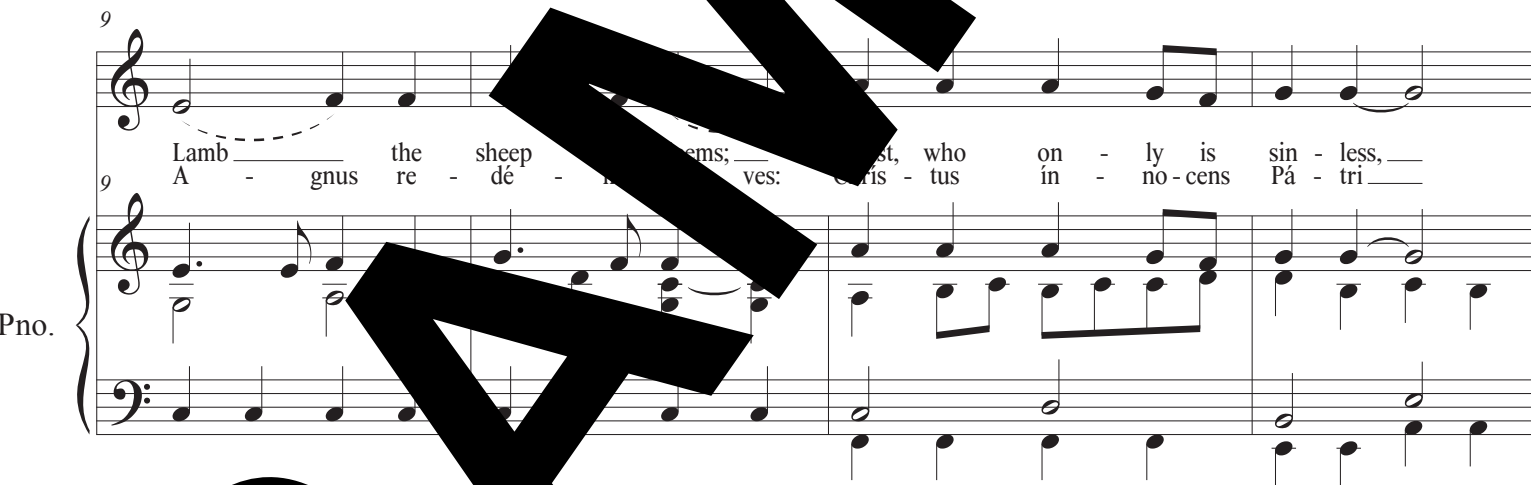
5 *mf*

Chris - tians, to the Pas - chal Vic - tim - fer - rant - thank - ful - prai - ses! A
Vic - ti - mae pas - chá - li láu - des - lent - Chri - sti - á - ni,



9

Lamb - gnus the sheep - ers; - st, who on - ly is sin - less,
A - gnus re - dé - m - ves: - tis - tus in - no - cens Pá - tri



Music © 2019 David A. Gatwood (ASCAP). All Rights Reserved.

Text: Irregular; Poetic Sequence for Easter, Victimae paschali laudes; fr. The Roman Missal

© 1964, The National Catholic Welfare Conference, Inc. (now U.S. Conference of Catholic Bishops.)

All rights reserved. Used with permission.

13

Re - con - ciles sin - ners to the Fa - ther. Death and life have - ten ded
 re - con - ci - li - á - vit pec - ca - tó - res. Mors et ví - t - é - l - lo

Pno.

17

in that com - bat stu - pen - dous: The Prin who gns im - mor - tal.
 con - fli - xé - re mi - rán - do: dux tu - us, gnát ví - vus.

Pno.

21

Speak, Ma - ry, de - ing at you saw, way - far - ing. "The
 Dic nó - bis Ma - vi - dis - ti in ví - a? Se -

Pno.

SAMPLE

25



tomb of Christ, who is liv - ing, The glo - ry of Je - sus' re - rec - tion;
púl - crum Chris - ti vi - vén - tis, et gló - ri - am vi - di - mus ar - gen -

Pno.



29



Bright an - gels at - test - ing, The sup - nap - kin - ting. Sur -
An - gé - li - cos tés - tes, et su - per - na - tes. Sur -

Pno.

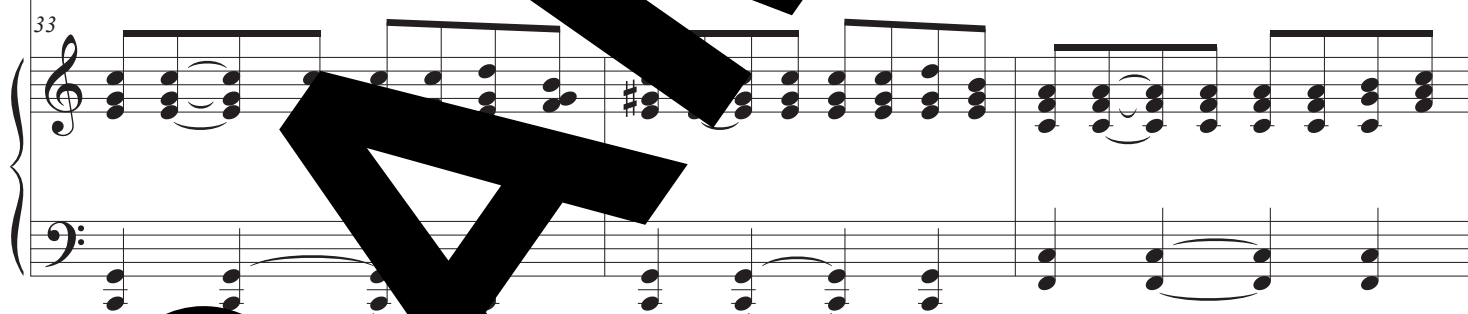


33



Yes, Christ my hope His to Ga - li - lee he goes be -
rét - it Chris - tus mé - praecé - det sú - os in Ga - li -

Pno.



SAMPLE

Christians to the Pascal Victim

fore you." _____ Christ in - deed from death is ris - en on our
laé - am. _____ Scí - mus Chris - tum sur - rex - it ter - ti - a se - cun - da a

Pno.

new life ob - tain - ing: mer vic - tor e - ver
mór - tu - is vé - re: nó - vic - tor Rex, mi - se -

Pno.

43 reign - - - ing! - - - men. Al - le - lu - ia. _____
43 ré - - - re. - - - men. Al - le - lú - ia. _____

Pno.

SAMPLE